



Order form

# Comfort ACTA-BACK® LTS back support



Dealer Name\*:

Account #\*:

City, State, Zip\*:

Phone:

Email:

ATP:

Rep Name:

P.O. Number:

Quote Number:

Client Reference\*:

Client Weight\*:

**\*Required field**

Special considerations that need to be addressed here (e.g., diagnosis):

**Notes** | Refer to reference pages at end of order form for additional information and images.

## ACTA-BACK® LTS Back Support

HCPSC coding: E2620/E2621 Positioning back, planar with lateral supports. Part number: ABLTS-BSXXWYYL.

| Length | 22" |          |          | \$947.00 | \$947.00 | \$947.00 | \$1,036.00 | \$1,036.00 |
|--------|-----|----------|----------|----------|----------|----------|------------|------------|
|        | 20" |          | \$947.00 | \$947.00 | \$947.00 | \$947.00 | \$1,036.00 | \$1,036.00 |
|        | 18" |          | \$871.00 | \$871.00 | \$871.00 | \$871.00 | \$960.00   | \$960.00   |
|        | 16" |          | \$871.00 | \$871.00 | \$871.00 | \$871.00 | \$960.00   |            |
|        | 14" | \$871.00 | \$871.00 | \$871.00 | \$871.00 | \$871.00 |            |            |
|        | 12" | \$871.00 | \$871.00 | \$871.00 | \$871.00 |          |            |            |
|        |     | 12"      | 14"      | 16"      | 18"      | 20"      | 22"        | 24"        |
| Width  |     |          |          |          |          |          |            |            |

12" length and width require power mount hardware.

24" wide back supports require 4 point or power mount hardware.

**Cover** | Required, choose one.

COMFORT-TEK

**COMFORT-TEK**

For fluid protection, an easily cleaned surface

NC

STRETCH-AIR

**STRETCH-AIR**

For comfort and heat dissipation

NC

## Hardware | Required, choose one.

|                      |                                      |  |         |
|----------------------|--------------------------------------|--|---------|
| <b>Quick Release</b> | Quick Release 2 Point (Q-COMPASS)    | Quick Release 4 Point (Q-COMPASS4)     | NC      |
| <b>Fixed</b>         | Fixed 2 Point (NQ-COMPASS)           | Fixed 4 Point (NQ-COMPASS4)            | NC      |
| <b>Power Mount</b>   | Permobil w/ Corpus 3G (PMB-PERMOBIL) | Quantum w/ Tru Balance 3 (PMB-QUANTUM) | \$52.00 |
|                      | Quickie w/ 3.7 Power (PMB-QUICKIE)   | Avid Rehab w/ Power T & R (PMB-AVID)   |         |
|                      | ROVI w/ Motion Concepts (PMB-ROVI)   |  |         |

Using Power Mount hardware on ROVI requires mounting to the recessed planar interface plate available when ordering the Motion Concepts seating system. Drilling is required for mounting.

## Lateral trunk support | Required, choose one. Includes moldable support and fixed hardware.

|                      |                                    |                                    |    |
|----------------------|------------------------------------|------------------------------------|----|
| <b>3" L x 4" D</b>   | COMFORT-TEK (LAT-3L4D-COMFORT-TEK) | STRETCH-AIR (LAT-3L4D-STRETCH-AIR) | NC |
| <b>4" L x 5" D</b>   | COMFORT-TEK (LAT-4L5D-COMFORT-TEK) | STRETCH-AIR (LAT-4L5D-STRETCH-AIR) | NC |
| <b>4" L x 6.5" D</b> | COMFORT-TEK (LAT-4L6D-COMFORT-TEK) | STRETCH-AIR (LAT-4L6D-STRETCH-AIR) | NC |
| <b>5" L x 6.5" D</b> | COMFORT-TEK (LAT-5L6D-COMFORT-TEK) | STRETCH-AIR (LAT-5L6D-STRETCH-AIR) | NC |

## Additional lateral trunk support hardware | Optional, priced per selection.

|                            |                               |                                |          |       |
|----------------------------|-------------------------------|--------------------------------|----------|-------|
| <b>Swing-away hardware</b> | Left (BL-LTS-GT2SAS-LH)       | Right (BL-LTS-GT2SAS-RH)       | \$339.00 | E1028 |
|                            | Extra Left (BL-LTS-GT2SAS-LH) | Extra Right (BL-LTS-GT2SAS-RH) |          |       |
| <b>Extra hardware link</b> | Left (BL-LTS-GT2LINK)         | Right (BL-LTS-GT2LINK)         | \$43.00  |       |
|                            | Extra Left (BL-LTS-GT2LINK)   | Extra Right (BL-LTS-GT2LINK)   |          |       |
| <b>Hardware cover</b>      | Left (BL-LTS-HCOVER)          | Right (BL-LTS-HCOVER)          | \$31.00  |       |
|                            | Extra Left (BL-LTS-HCOVER)    | Extra Right (BL-LTS-HCOVER)    |          |       |

## Accessories | Optional

|         |   |         |
|---------|---|---------|
| PV-FLAP | <b>Privacy Flap</b><br>Connects with hook & loop attachment | \$44.00 |
|---------|---|---------|

## BodiLink premium head support & hardware

Optional, if selecting must choose pad size, foam selection, cover, and mounting hardware.

### Pad size and foam selection

|                 | Soft          | Extra soft    |          |       |
|-----------------|---------------|---------------|----------|-------|
| <b>Pad size</b> |               |               |          |       |
| 6"W x 3"L       | BL-HSP1-6W3L  | BL-HSP2-6W3L  | \$269.00 | E0955 |
| 8"W x 4"L       | BL-HSP1-8W4L  | BL-HSP2-8W4L  | \$269.00 | E0955 |
| 10"W x 5"L      | BL-HSP1-10W5L | BL-HSP2-10W5L | \$269.00 | E0955 |
| 12"W x 5"L      | BL-HSP1-12W5L | BL-HSP2-12W5L | \$269.00 | E0955 |
| 14"W x 5"L      | BL-HSP1-14W5L | BL-HSP2-14W5L | \$269.00 | E0955 |
| 18"W x 5"L      | BL-HSP1-18W5L | BL-HSP2-18W5L | \$269.00 | E0955 |

### Cover options

|             |  |         |
|-------------|--|---------|
| COMFORT-TEK | <b>COMFORT-TEK</b><br>For fluid protection & an easily cleaned surface         | NC      |
| STRETCH-AIR | <b>STRETCH-AIR</b><br>For comfort & heat dissipation                           | NC      |
| GLIDEWEAR   | <b>GlideWear</b><br>For skin protection & shear reduction. NOT fluid resistant | \$30.00 |

## PT hardware, removable

|                 |       |          |       |
|-----------------|-------|----------|-------|
| BL-HS-PT1RMMID6 | Mid 6 | \$254.00 | E1028 |
| BL-HS-PT1RMLAT6 | Lat 6 | \$295.00 | E1028 |
| BL-HS-PT1RMMID8 | Mid 8 | \$254.00 | E1028 |
| BL-HS-PT1RMLAT8 | Lat 8 | \$295.00 | E1028 |
| BL-HS-PT1RMMAX8 | Max 8 | \$372.00 | E1028 |

## Stem length option | *For removable PT hardware only.*

|           |   |    |
|-----------|---|----|
| HS-STEM-7 | Standard 7" stem  | NC |
| HS-STEM-3 | 3"stem (recommended for use with power mounting where there may be constraints) | NC |

## PT hardware, flip down | *Flip down hardware has 7" stem.*

|                 |       |          |       |
|-----------------|-------|----------|-------|
| BL-HS-PT1FDMID6 | Mid 6 | \$310.00 | E1028 |
| BL-HS-PT1FDLAT6 | Lat 6 | \$353.00 | E1028 |
| BL-HS-PT1FDMID8 | Mid 8 | \$310.00 | E1028 |
| BL-HS-PT1FDLAT8 | Lat 8 | \$353.00 | E1028 |
| BL-HS-PT1FDMAX8 | Max 8 | \$405.00 | E1028 |

## Mounting option

|             |             |    |
|-------------|-------------|----|
| HS-MB-POSTA | Posterior A | NC |
|-------------|-------------|----|

## Additional hardware options | *Priced per selection.*

|                            |   |                                |         |
|----------------------------|---|--------------------------------|---------|
| Extra link for PT hardware | Extra 2" link (BL-HS-PT1LINK2)                                      | Extra 3" link (BL-HS-PT1LINK3) | \$65.00 |
|                            | Extra 4" link (BL-HS-PT1LINK4)                                      |                                |         |
| BL-HS-52WINGA1             | Tool-less wing lock for PT hardware<br><i>Enter desired number.</i> |                                | \$25.00 |
| BL-HS-SPCRA                | 1/4 Spacer Plate  |                                | \$43.00 |

## Additional Order Instructions (for Permobil):

## Notes & Comments (not for Permobil):

## Chair Order Policy:

You are highly encouraged to contact Permobil Sales with ANY questions regarding proper completion of our order forms at 1-800-736-0925. The order cannot be processed without the following:

- The client's name or code and the client's weight
- The order form must also be signed by a person authorized by your company to acknowledge the items selected. Permobil is not responsible for configuration or size discrepancies resulting from customer errors on the order form.
- Order confirmations will be provided by Permobil summarizing the items selected. Please review this carefully.
- Once the order is shipped, any changes are subject to the returns policy and may be prohibited.

## Order Acknowledgement:

I, \_\_\_\_\_, am an agent of the medical equipment provider named on this order form and I have the authority to contract for the purchase of powered wheelchairs and related parts on behalf of said provider. I acknowledge that I have reviewed this order and that it is complete and accurate to the best of my knowledge. I further acknowledge that any changes to this order after submission of this order form are subject to the returns policy and may carry additional charges.

Signed: \_\_\_\_\_

Printed Name: \_\_\_\_\_

Title: \_\_\_\_\_

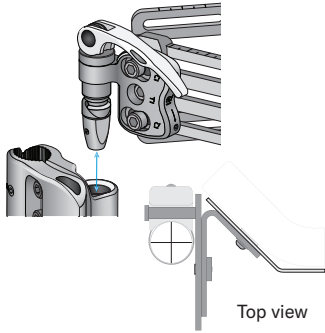
Date: \_\_\_\_\_

*NOTE: All specifications and prices are subject to change without notice. Please note that prices displayed are only valid if ordered with the wheelchair. Any parts ordered for service or future alterations will carry different pricing and warranty. The HCPCS codes provided are not intended to be billing or legal advice, rather our interpretation of the code definitions. Use of the codes does not ensure coverage or payment for the item. For coverage information, verify the policy of the appropriate payer.*

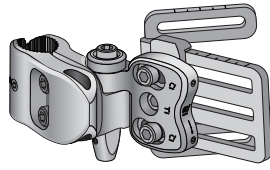
## References

### Section 1 | Hardware options

#### Compass 4 quick release

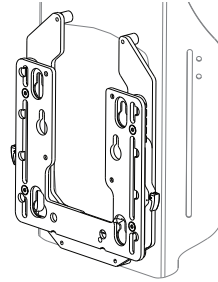


#### Compass 4 fixed

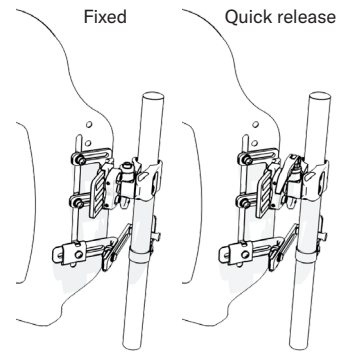


#### Compass power mount

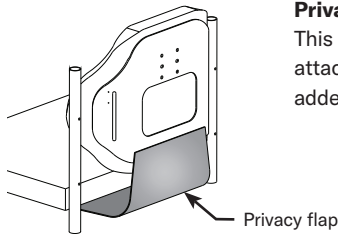
Power mount hardware has 8" of height adjustment in ½" increments without using tools.



#### 4-point



### Section 2 | Accessories



#### Privacy flap

This flap connects with hook & loop attachment between the seat and the back for added privacy.

### Section 3 | Bodilink head support pads

#### Basic pad sizes

| W |          |   |          |
|---|----------|---|----------|
| L | 6W x 5L  | L | 12W x 6L |
| L | 8W x 5L  | L | 14W x 6L |
| L | 10W x 6L | L | 18W x 6L |
|   |          | W |          |

Length(L) refers to the actual dimension of the support from bottom to top edge



Basic head support pads can be formed to any shape using the moldable steel insert inside the pad.

#### Premium pad sizes

| W |                                   |   |                                   |
|---|-----------------------------------|---|-----------------------------------|
| L | 6W x 3L                           | L | 12W x 5L<br>with adjustable wings |
| L | 8W x 4L                           | L | 14W x 5L<br>with adjustable wings |
| L | 10W x 5L<br>with adjustable wings | L | 18W x 5L<br>with adjustable wings |
|   |                                   | W |                                   |

Length(L) refers to the actual dimension of the support from bottom to top edge



Premium head support pad angles can be formed by adjusting the plates in the pad

### Section 4 | BodiLink head support hardware options

#### GT hardware, removable

#### Range of motion

| GT model | Total # of links | Total link length | Max. anterior reach | Max. posterior reach | Max. lateral reach |
|----------|------------------|-------------------|---------------------|----------------------|--------------------|
| LAT      | 5                | 10.5"             | 10"                 | 2"                   | 7.5"               |
| MID      | 3                | 8.5"              | 8"                  | 2"                   | N/A                |

GT hardware, LATERAL



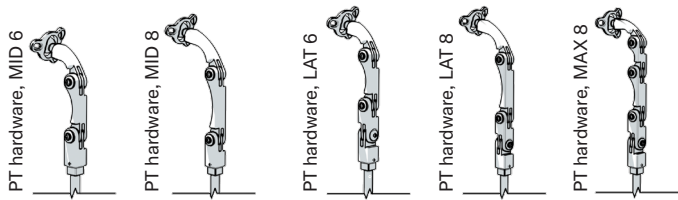
GT hardware, MID-LINE



**BodiLink head support hardware: PT hardware, removable**

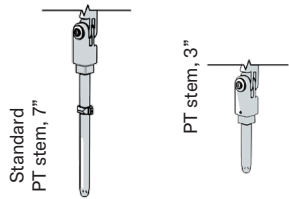
**Range of motion**

| PT model | Total # of links | Total link length | Max anterior reach | Max posterior reach | Max lateral reach |
|----------|------------------|-------------------|--------------------|---------------------|-------------------|
| MID 6    | 2                | 6"                | 5.5"               | 1"                  | N/A               |
| LAT 6    | 3                | 6"                | 5.5"               | 1"                  | 6"                |
| MID 8    | 2                | 8"                | 7.5"               | 1"                  | N/A               |
| LAT 8    | 3                | 8"                | 7.5"               | 1"                  | 8"                |
| MAX 8    | 4                | 8"                | 7.5"               | 3"                  | 8"                |

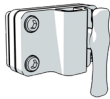


**BodiLink head support hardware: PT hardware, removable stem length option**

3" stem is recommended for use with power mounting where there may be special constraints with power chair functions



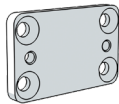
**Mounting options**



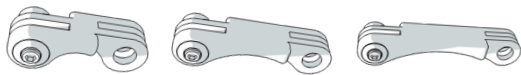
**Mounting block posterior A**  
For Acta-Back®, Acta-Embrace™, Visco-Back, and Acta-Relief with Power Mount Only

**Extra hardware**

¼" spacer plate



Extra links: 2", 3", 4"



Tool-less wing lock

