

Order form

BodiLink® Lateral Pelvic/Thigh Support Premium

HCPCS coding: E0953 / Lateral thigh support, E1028 / Removable hardware, E2231 / Solid seat support base



Lateral Pelvic Thigh Support with TT Power Mount Removable Hardware



Removable Solid Seat Pan

Company Name/ACCT #: _____

P.O. Number: _____

Requested By: _____

Phone: _____ Fax: _____

Email: _____

Ship To: _____

Client Reference: _____

For best results, do not fill out in your browser. Interactive form should be completed using Adobe Reader after saving to your local drive. Then email or print and fax to Customer Support at orders.comfort@permobil.com or 1.406.522.8563.

DO NOT SEND PROTECTED HEALTH INFORMATION. IT IS NOT NEEDED TO MAKE THE PRODUCT YOU ARE REQUESTING.

Since U.S. Medicare coding is subject to change, the provider should always confirm the HCPCS code and coverage criteria as part of the client assessment process.

1 Support pads

Please select sizes in the appropriate fabric & style charts below. Contact Customer Support for custom sizes that are not listed below 800.736.0925.

1.1 Premium pad shape & size

HCPCS code: E0953

MSRP \$72.00

- You may make one selection per column (Left, Extra Left, Right, and Extra Right) in section 1.1.
- Follow each column down to section 1.2 and select cover for each pad selected in section 1.1.

*Length (L) refers to the actual size dimension of the support from top to bottom edge. Depth (D) refers to the actual size dimension from anterior to posterior edge.

Style	Size	Left	Extra left	Right	Extra right
	3.5"L x 4"D	BL-LPTSP2Z-3L4D-LH	BL-LPTSP2Z-3L4D-LH	BL-LPTSP2Z-3L4D-RH	BL-LPTSP2Z-3L4D-RH
	3.5"L x 8"D	BL-LPTSP2Z-3L8D-LH	BL-LPTSP2Z-3L8D-LH	BL-LPTSP2Z-3L8D-RH	BL-LPTSP2Z-3L8D-RH
	3.5"L x 12"D	BL-LPTSP2Z-3L12D-LH	BL-LPTSP2Z-3L12D-LH	BL-LPTSP2Z-3L12D-RH	BL-LPTSP2Z-3L12D-RH
	5.5"L x 6"D	BL-LPTSP2Z-5L6D-LH	BL-LPTSP2Z-5L6D-LH	BL-LPTSP2Z-5L6D-RH	BL-LPTSP2Z-5L6D-RH

1.2 Premium pad cover with foam insert

Cover options	MSRP	Left	Extra left	Right	Extra right
COMFORT-TEK	\$0.00/ea.	LPTS-P2-COMFORT-FM	LPTS-P2-COMFORT-FM	LPTS-P2-COMFORT-FM	LPTS-P2-COMFORT-FM
STRETCH-AIR	\$0.00/ea.	LPTS-P2-STRETCH-FM	LPTS-P2-STRETCH-FM	LPTS-P2-STRETCH-FM	LPTS-P2-STRETCH-FM
GLIDEWEAR™	\$15.00/ea.	LPTS-P2-GLIDE-FM	LPTS-P2-GLIDE-FM	LPTS-P2-GLIDE-FM	LPTS-P2-GLIDE-FM



COMFORT-TEK

For fluid protection & an easily cleaned surface.



STRETCH-AIR

For comfort & heat dissipation.



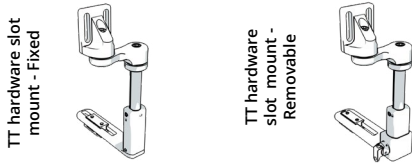
For skin protection & shear reduction.
Not fluid resistant.

2 Mounting hardware

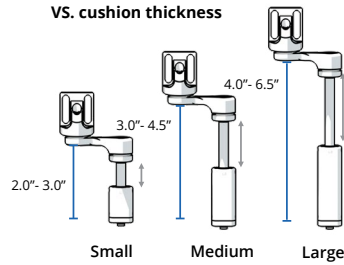
2.1 BodiLink® Lateral Pelvic/Thigh Support hardware

- You may make one selection per column (Left, Extra Left, Right, and Extra Right) in section 2.1 from group A or B.

A. TT hardware, slot mount



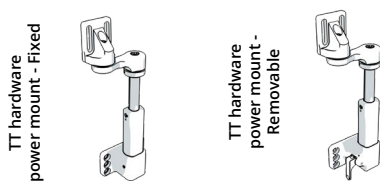
Hardware size
VS. cushion thickness



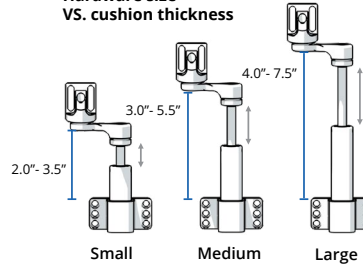
Hardware size	Max cushion thickness clearance	Recommended cushion thickness
Small	3.0"	2.0" - 3.0"
Medium	4.5"	3.0" - 4.5"
Large	6.5"	4.0" - 6.5"

		Size	MSRP	Left		Extra left		Right		Extra right	
Fixed	Or	Small	\$161.00		BL-LPTS-TT1FXSL1-LH		BL-LPTS-TT1FXSL1-LH		BL-LPTS-TT1FXSL1-RH		BL-LPTS-TT1FXSL1-RH
		Medium	\$161.00		BL-LPTS-TT1FXSL2-LH		BL-LPTS-TT1FXSL2-LH		BL-LPTS-TT1FXSL2-RH		BL-LPTS-TT1FXSL2-RH
		Large	\$161.00		BL-LPTS-TT1FXSL3-LH		BL-LPTS-TT1FXSL3-LH		BL-LPTS-TT1FXSL3-RH		BL-LPTS-TT1FXSL3-RH
Removable E1028	Or	Small	\$282.00		BL-LPTS-TT1RMSL1-LH		BL-LPTS-TT1RMSL1-LH		BL-LPTS-TT1RMSL1-RH		BL-LPTS-TT1RMSL1-RH
		Medium	\$282.00		BL-LPTS-TT1RMSL2-LH		BL-LPTS-TT1RMSL2-LH		BL-LPTS-TT1RMSL2-RH		BL-LPTS-TT1RMSL2-RH
		Large	\$282.00		BL-LPTS-TT1RMSL3-LH		BL-LPTS-TT1RMSL3-LH		BL-LPTS-TT1RMSL3-RH		BL-LPTS-TT1RMSL3-RH

B. TT hardware, power mount



Hardware size
VS. cushion thickness



Hardware size	Max cushion thickness clearance	Recommended cushion thickness
Small	3.5"	2.0" - 3.5"
Medium	5.5"	3.0" - 5.5"
Large	7.5"	4.0" - 7.5"

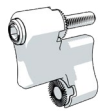
		Size	MSRP	Left		Extra left		Right		Extra right	
Fixed	Or	Small	\$211.00		BL-LPTS-TT1FXPWL1-LH		BL-LPTS-TT1FXPWL1-LH		BL-LPTS-TT1FXPWL1-RH		BL-LPTS-TT1FXPWL1-RH
		Medium	\$211.00		BL-LPTS-TT1FXPWL2-LH		BL-LPTS-TT1FXPWL2-LH		BL-LPTS-TT1FXPWL2-RH		BL-LPTS-TT1FXPWL2-RH
		Large	\$211.00		BL-LPTS-TT1FXPWL3-LH		BL-LPTS-TT1FXPWL3-LH		BL-LPTS-TT1FXPWL3-RH		BL-LPTS-TT1FXPWL3-RH
Removable E1028	Or	Small	\$324.00		BL-LPTS-TT1RMPWL1-LH		BL-LPTS-TT1RMPWL1-LH		BL-LPTS-TT1RMPWL1-RH		BL-LPTS-TT1RMPWL1-RH
		Medium	\$324.00		BL-LPTS-TT1RMPWL2-LH		BL-LPTS-TT1RMPWL2-LH		BL-LPTS-TT1RMPWL2-RH		BL-LPTS-TT1RMPWL2-RH
		Large	\$324.00		BL-LPTS-TT1RMPWL3-LH		BL-LPTS-TT1RMPWL3-LH		BL-LPTS-TT1RMPWL3-RH		BL-LPTS-TT1RMPWL3-RH

TT hardware, power mount option

Note: If choosing the Power Mount Hardware, choose the appropriate power mount type below.

Power mount	MSRP	Part number	
QUANTUM	add \$0.00		LPTS-TT1-PW1
PERMOBIL	add \$0.00		LPTS-TT1-PW2
QUICKIE	add \$0.00		LPTS-TT1-PW3
ROVI	add \$0.00		LPTS-TT1-PW4
AVID REHAB	add \$0.00		LPTS-TT1-PW5

2.2 Additional options



GT additional hardware links		Left		Extra left		Right		Extra right	
MSRP \$43.00/link (2 Additional 1.25" Links Allowed Per Hardware Ordered)			BL-LPTS-GT2LINK		BL-LPTS-GT2LINK		BL-LPTS-GT2LINK		BL-LPTS-GT2LINK
			BL-LPTS-GT2LINK		BL-LPTS-GT2LINK		BL-LPTS-GT2LINK		BL-LPTS-GT2LINK

3 Solid seat pans

3.1 Removable solid seat pan & hardware kit

HCPCS code: E2231 MSRP \$440.00

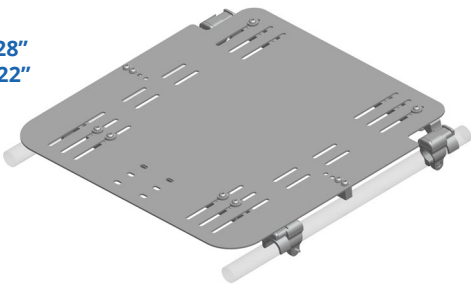
The solid seat pan kit includes a slotted aluminum pan and attaching hardware to accommodate 7/8" or 1" tubing. The kit also comes with two different cross bars to accommodate various wheelchair frame types. This will fit both folding and non-folding seat rails. Lateral thigh support hardware can be easily attached.

Please fill in the below with dimensions.
Example Part for 14W x 16D: **RSSP-1-1416**

RSSP-1-_____

Size range:
Width: 10" - 28"
Depth: 10" - 22"

Part Number:
RSSP-1-WWDD



QUESTIONS? PLEASE CONTACT CUSTOMER SUPPORT FOR ASSISTANCE. | 800.736.0925

The following are trademarks and registered trademarks of Permobil Seating and Positioning: BodiLink®, COMFORT-TEK®, and STRETCH-AIR®. GlideWear™ is a trademark of MIPS.