

Order form

BodiLink® Lateral Pelvic/Thigh Support Basic

HCPCS coding: E0953 / Lateral thigh support, E1028 / Removable hardware, E2231 / Solid seat support base



Lateral Pelvic Thigh Support with GT Slot Mount Removable Hardware Shown on Removable Solid Seat Pan



Removable Solid Seat Pan

Company Name/ACCT #: _____

P.O. Number: _____

Requested By: _____

Phone: _____ Fax: _____

Email: _____

Ship To: _____

Client Reference: _____

For best results, do not fill out in your browser. Interactive form should be completed using Adobe Reader after saving to your local drive. Then email or print and fax to Customer Support at orders.comfort@permobil.com or 1.406.522.8563.

DO NOT SEND PROTECTED HEALTH INFORMATION. IT IS NOT NEEDED TO MAKE THE PRODUCT YOU ARE REQUESTING.

Since U.S. Medicare coding is subject to change, the provider should always confirm the HCPCS code and coverage criteria as part of the client assessment process.

1 Support pads

Please select sizes in the appropriate fabric & style charts below.
Contact Customer Support for custom sizes that are not listed below. 800.736.0925

1.1 Basic pad size & shape

HCPCS Code: E0953

MSRP \$60.00

- You may make one selection per column (Left, Extra Left, Right, and Extra Right) in section 1.1.
- Follow each column down to section 1.1 and select a style and cover for each pad selected in section 1.2.

*Length (L) refers to the actual size dimension of the support from top to bottom edge. Depth (D) refers to the actual size dimension from anterior to posterior edge.

| Zero elevation | Style | Size | Left | Extra left | Right | Extra right |
|----------------|-------|-------------|---------------------|---------------------|---------------------|---------------------|
| | | 3"L x 4"D | BL-LPTSP1Z-3L4D-LH | BL-LPTSP1Z-3L4D-LH | BL-LPTSP1Z-3L4D-RH | BL-LPTSP1Z-3L4D-RH |
| | | 3"L x 5"D | BL-LPTSP1Z-3L5D-LH | BL-LPTSP1Z-3L5D-LH | BL-LPTSP1Z-3L5D-RH | BL-LPTSP1Z-3L5D-RH |
| | | 4"L x 4"D | BL-LPTSP1Z-4L4D-LH | BL-LPTSP1Z-4L4D-LH | BL-LPTSP1Z-4L4D-RH | BL-LPTSP1Z-4L4D-RH |
| | | 4"L x 6"D | BL-LPTSP1Z-4L6D-LH | BL-LPTSP1Z-4L6D-LH | BL-LPTSP1Z-4L6D-RH | BL-LPTSP1Z-4L6D-RH |
| | | 4"L x 8"D | BL-LPTSP1Z-4L8D-LH | BL-LPTSP1Z-4L8D-LH | BL-LPTSP1Z-4L8D-RH | BL-LPTSP1Z-4L8D-RH |
| | | 4"L x 10"D | BL-LPTSP1Z-4L10D-LH | BL-LPTSP1Z-4L10D-LH | BL-LPTSP1Z-4L10D-RH | BL-LPTSP1Z-4L10D-RH |
| | | 4"L x 12" D | BL-LPTSP1Z-4L12D-LH | BL-LPTSP1Z-4L12D-LH | BL-LPTSP1Z-4L12D-RH | BL-LPTSP1Z-4L12D-RH |
| | | 4"L x 14" D | BL-LPTSP1Z-4L14D-LH | BL-LPTSP1Z-4L14D-LH | BL-LPTSP1Z-4L14D-RH | BL-LPTSP1Z-4L14D-RH |
| | | 4"L x 16" D | BL-LPTSP1Z-4L16D-LH | BL-LPTSP1Z-4L16D-LH | BL-LPTSP1Z-4L16D-RH | BL-LPTSP1Z-4L16D-RH |
| | | 5"L x 7" D | BL-LPTSP1Z-5L7D-LH | BL-LPTSP1Z-5L7D-LH | BL-LPTSP1Z-5L7D-RH | BL-LPTSP1Z-5L7D-RH |

1.2 Basic pad cover

| Cover option | MSRP | Left | Extra left | Right | Extra right |
|--------------|-------------|-----------------|-----------------|-----------------|-----------------|
| COMFORT-TEK | \$0.00/ea. | LPTS-P1-COMFORT | LPTS-P1-COMFORT | LPTS-P1-COMFORT | LPTS-P1-COMFORT |
| STRETCH-AIR | \$0.00/ea. | LPTS-P1-STRETCH | LPTS-P1-STRETCH | LPTS-P1-STRETCH | LPTS-P1-STRETCH |
| GLIDEWEAR™ | \$15.00/ea. | LPTS-P1-GLIDE | LPTS-P1-GLIDE | LPTS-P1-GLIDE | LPTS-P1-GLIDE |



COMFORT-TEK

For fluid protection & an easily cleaned surface.



STRETCH-AIR

For comfort & heat dissipation.

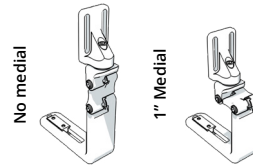
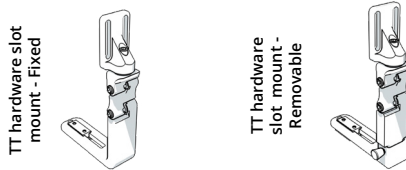


For skin protection & shear reduction.
Not fluid resistant.

2 Mounting hardware

2.1 GT hardware (Only slot mount)

- You may make one selection per column (Left, Extra Left, Right, and Extra Right) in section 2.1.

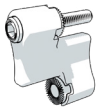


| Hardware size | Max cushion thickness clearance | Recommended cushion thickness |
|---------------|---------------------------------|-------------------------------|
| No medial | *5.0" | 2.5"- 5.0" |
| 1" Medial | *4.0" | 2.25"- 4.0" |

*If you need to increase the height or medial reach, add additional links in section 2.2.

| Size | MSRP | Left | Extra left | Right | Extra right |
|---------------------------|----------|-------------------|-------------------|-------------------|-------------------|
| Fixed | \$118.00 | BL-LPTS-GT2FXS-LH | BL-LPTS-GT2FXS-LH | BL-LPTS-GT2FXS-RH | BL-LPTS-GT2FXS-RH |
| Removable E1028 | \$258.00 | BL-LPTS-GT2RMS-LH | BL-LPTS-GT2RMS-LH | BL-LPTS-GT2RMS-RH | BL-LPTS-GT2RMS-RH |

2.2 Additional options



GT additional hardware links

MSRP \$43.00/link
(2 Additional 1.25" Links Allowed
Per Hardware Ordered)

| Left | Extra left | Right | Extra right |
|-----------------|-----------------|-----------------|-----------------|
| BL-LPTS-GT2LINK | BL-LPTS-GT2LINK | BL-LPTS-GT2LINK | BL-LPTS-GT2LINK |
| BL-LPTS-GT2LINK | BL-LPTS-GT2LINK | BL-LPTS-GT2LINK | BL-LPTS-GT2LINK |

3 Solid seat pans

3.1 Removable solid seat pan & hardware kit

HCPCS Code: E2231 MSRP \$440.00

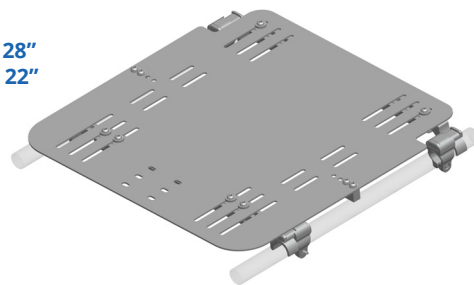
The solid seat pan kit includes a slotted aluminum pan and attaching hardware to accommodate 7/8" or 1" tubing. The kit also comes with two different cross bars to accommodate various wheelchair frame types. This will fit both folding and non-folding seat rails. Lateral thigh support hardware can be easily attached.

Please fill in the below with dimensions.
Example Part for 14W x 16D: **RSSP-1-1416**

RSSP-1- _____

Size range:
Width: **10" - 28"**
Depth: **10" - 22"**

Part Number:
RSSP-1-WWDD



QUESTIONS? PLEASE CONTACT CUSTOMER SUPPORT FOR ASSISTANCE. | 800.736.0925

The following are trademarks and registered trademarks of Permobil Seating and Positioning: BodiLink®, COMFORT-TEK®, and STRETCH-AIR®. GlideWear™ is a trademark of MIPS.

LATERAL PELVIC/THIGH SUPPORT BASIC ORDER FORM Client Reference: _____

Submit by email

PAGE 2 of 2

DO NOT SEND PROTECTED HEALTH INFORMATION. IT IS NOT NEEDED TO MAKE THE PRODUCT YOU ARE REQUESTING.

LATERAL-PELVIC-THIGH-SUPPORT-BASIC-ORDER REV111422