

BODILINK® Lateral Pelvic/Thigh Support BASIC ORDER FORM

HCPCS CODING: E0953 - LATERAL THIGH SUPPORT
E1028 - REMOVABLE HARDWARE
E2231 - SOLID SEAT SUPPORT BASE

Since U.S. Medicare coding is subject to change, the provider should always confirm the HCPCS code and coverage criteria as part of the client assessment process.



Lateral Pelvic Thigh Support with GT Slot Mount Removable Hardware Shown on Removable Solid Seat Pan



Removable Solid Seat Pan

Company Name/ACCT #: _____

P.O. Number: _____

Requested By: _____

Phone: _____ Fax: _____

Email: _____

Ship To: _____

Patient Reference: _____

For best results, do not fill out in your browser. Interactive form should be completed using Adobe Reader after saving to your local drive. Then email or print and fax to Customer Support at orders.comfort@permobil.com or 1.406.522.8563.

DO NOT SEND PROTECTED HEALTH INFORMATION. IT IS NOT NEEDED TO MAKE THE PRODUCT YOU ARE REQUESTING.

1 SUPPORT PADS

Please select sizes in the appropriate fabric & style charts below. Contact Customer Support for custom sizes that are not listed below. 800.736.0925

1.1 BASIC PAD SIZE & SHAPE

HCPCS Code: E0953 MSRP \$52.00

- You may make one selection per column (Left, Extra Left, Right, and Extra Right) in section 1.1.
- Follow each column down to section 1.1 and select a style and cover for each pad selected in section 1.2.

*Length (L) refers to the actual size dimension of the support from top to bottom edge. Depth (D) refers to the actual size dimension from anterior to posterior edge.

| ZERO ELEVATION | STYLE | SIZE | LEFT | EXTRA LEFT | RIGHT | EXTRA RIGHT | |
|----------------|-------|------------|--------------------|---------------------|---------------------|---------------------|---------------------|
| | | | 3"L x 4"D | BL-LPTSP1Z-3L4D-LH | BL-LPTSP1Z-3L4D-LH | BL-LPTSP1Z-3L4D-RH | BL-LPTSP1Z-3L4D-RH |
| | | | 3"L x 5"D | BL-LPTSP1Z-3L5D-LH | BL-LPTSP1Z-3L5D-LH | BL-LPTSP1Z-3L5D-RH | BL-LPTSP1Z-3L5D-RH |
| | | | 4"L x 4"D | BL-LPTSP1Z-4L4D-LH | BL-LPTSP1Z-4L4D-LH | BL-LPTSP1Z-4L4D-RH | BL-LPTSP1Z-4L4D-RH |
| | | | 4"L x 6"D | BL-LPTSP1Z-4L6D-LH | BL-LPTSP1Z-4L6D-LH | BL-LPTSP1Z-4L6D-RH | BL-LPTSP1Z-4L6D-RH |
| | | | 4"L x 8"D | BL-LPTSP1Z-4L8D-LH | BL-LPTSP1Z-4L8D-LH | BL-LPTSP1Z-4L8D-RH | BL-LPTSP1Z-4L8D-RH |
| | | | 4"L x 10"D | BL-LPTSP1Z-4L10D-LH | BL-LPTSP1Z-4L10D-LH | BL-LPTSP1Z-4L10D-RH | BL-LPTSP1Z-4L10D-RH |
| | | | 4"L x 12" D | BL-LPTSP1Z-4L12D-LH | BL-LPTSP1Z-4L12D-LH | BL-LPTSP1Z-4L12D-RH | BL-LPTSP1Z-4L12D-RH |
| | | | 4"L x 14" D | BL-LPTSP1Z-4L14D-LH | BL-LPTSP1Z-4L14D-LH | BL-LPTSP1Z-4L14D-RH | BL-LPTSP1Z-4L14D-RH |
| | | | 4"L x 16" D | BL-LPTSP1Z-4L16D-LH | BL-LPTSP1Z-4L16D-LH | BL-LPTSP1Z-4L16D-RH | BL-LPTSP1Z-4L16D-RH |
| | | 5"L x 7" D | BL-LPTSP1Z-5L7D-LH | BL-LPTSP1Z-5L7D-LH | BL-LPTSP1Z-5L7D-RH | BL-LPTSP1Z-5L7D-RH | |

1.2 BASIC PAD COVER

| COVER OPTIONS | MSRP | LEFT | EXTRA LEFT | RIGHT | EXTRA RIGHT |
|---------------|-------------|-----------------|-----------------|-----------------|-----------------|
| COMFORT-TEK | \$0.00/ea. | LPTS-P1-COMFORT | LPTS-P1-COMFORT | LPTS-P1-COMFORT | LPTS-P1-COMFORT |
| STRETCH-AIR | \$0.00/ea. | LPTS-P1-STRETCH | LPTS-P1-STRETCH | LPTS-P1-STRETCH | LPTS-P1-STRETCH |
| GLIDEWEAR™ | \$13.00/ea. | LPTS-P1-GLIDE | LPTS-P1-GLIDE | LPTS-P1-GLIDE | LPTS-P1-GLIDE |

COMFORT-TEK
FOR FLUID PROTECTION & AN EASILY CLEANED SURFACE.

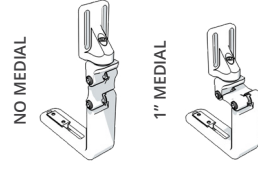
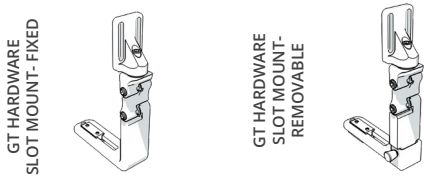
STRETCH-AIR
FOR COMFORT & HEAT DISSIPATION.

GLIDEWEAR™
FOR SKIN PROTECTION & SHEAR REDUCTION. NOT FLUID RESISTANT.

2 MOUNTING HARDWARE

• You may make one selection per column (Left, Extra Left, Right, and Extra Right) in section 2.1.

2.1 GT HARDWARE (ONLY SLOT MOUNT)

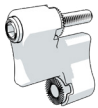


| HARDWARE | MAX CUSHION THICKNESS CLEARANCE | RECOMMENDED CUSHION THICKNESS |
|-----------|---------------------------------|-------------------------------|
| NO MEDIAL | *5.0" | 2.5" - 5.0" |
| 1" MEDIAL | *4.0" | 2.25" - 4.0" |

*If you need to increase the height or medial reach, add additional links in section 2.2.

| SIZE | MSRP | LEFT | EXTRA LEFT | RIGHT | EXTRA RIGHT |
|---------------------------|----------|-------------------|-------------------|-------------------|-------------------|
| FIXED | \$103.00 | BL-LPTS-GT2FXS-LH | BL-LPTS-GT2FXS-LH | BL-LPTS-GT2FXS-RH | BL-LPTS-GT2FXS-RH |
| REMOVABLE E1028 | \$226.00 | BL-LPTS-GT2RMS-LH | BL-LPTS-GT2RMS-LH | BL-LPTS-GT2RMS-RH | BL-LPTS-GT2RMS-RH |

2.2 ADDITIONAL OPTIONS



| GT ADDITIONAL HARDWARE LINKS | LEFT | EXTRA LEFT | RIGHT | EXTRA RIGHT |
|--|-----------------|-----------------|-----------------|-----------------|
| MSRP \$37.00/link (2 Additional 1.25" Links Allowed Per Hardware Ordered) | BL-LPTS-GT2LINK | BL-LPTS-GT2LINK | BL-LPTS-GT2LINK | BL-LPTS-GT2LINK |
| | BL-LPTS-GT2LINK | BL-LPTS-GT2LINK | BL-LPTS-GT2LINK | BL-LPTS-GT2LINK |

3 SOLID SEAT PANS

3.1 REMOVABLE SOLID SEAT PAN & HARDWARE KIT

HCPCS Code: E2231 MSRP \$387.00

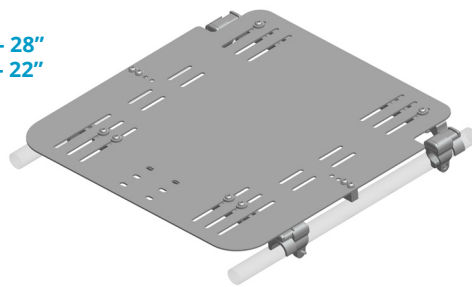
The solid seat pan kit includes a slotted aluminum pan and attaching hardware to accommodate 7/8" or 1" tubing. The kit also comes with two different cross bars to accommodate various wheelchair frame types. This will fit both folding and non-folding seat rails. Lateral thigh support hardware can be easily attached.

Please fill in the below with dimensions.
Example Part for 14W x 16D: **RSSP-1-1416**

RSSP-1- _____

SIZE RANGE:
WIDTH: **10" - 28"**
DEPTH: **10" - 22"**

Part Number:
RSSP-1-WWDD



QUESTIONS? PLEASE CONTACT CUSTOMER SUPPORT FOR ASSISTANCE. | 800.736.0925

The following are trademarks and registered trademarks of Permobil Seating and Positioning: Bodilink®, COMFORT-TEK®, and STRETCH-AIR®. GlideWear™ is a trademark of MIPS.