

Vicair® Active O2 Low

HCPCS CODING: E2624/E2625
ADJUSTABLE SKIN PROTECTION & POSITIONING

permobil

SEATING + POSITIONING



Active O2

Company Name/ACCT #: _____

P.O. Number: _____

Requested By: _____

Phone: _____ Fax: _____

Email: _____

Ship To: _____

User Reference: _____

For best results, do not fill out in your browser. Interactive form should be completed using Adobe Reader after saving to your local drive. Then email or print and fax to Customer Support at orders.comfort@permobil.com or 1.406.522.8563.

DO NOT SEND PROTECTED HEALTH INFORMATION. IT IS NOT NEEDED TO MAKE THE PRODUCT YOU ARE REQUESTING.

1 SIZE & STYLE

Choose the size needed for the Active O2 Low.

ACTIVE O2 LOW

 = Nonstock items available at extended lead times and a \$40.00 upcharge

	\$476.00				\$525.00	
DEPTH	22"		OCTL-1822	OCTL-2022	OCTL-2222	OCTL-2422
	20"	OCTL-1620	OCTL-1820	OCTL-2020	OCTL-2220	OCTL-2420
	18"	OCTL-1418	OCTL-1618	OCTL-1818	OCTL-2018	OCTL-2218
	16"	OCTL-1416	OCTL-1616	OCTL-1816	OCTL-2016	
	14"	OCTL-1414				
	14"	16"	18"	20"	22"	24"
	WIDTH					

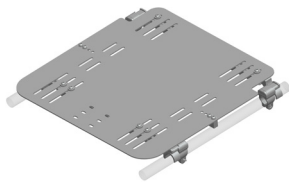
2 ACTIVE O2 ACCESSORIES

2.1

REMOVABLE SOLID SEAT PAN & HARDWARE KIT

HCPCS Code: E2231 MSRP \$387.00

The solid seat pan kit includes a slotted aluminum pan and attaching hardware to accommodate 7/8" or 1" tubing. The kit also comes with two different cross bars to accommodate various wheelchair frame types. This will fit both folding and non-folding seat rails. Lateral thigh support hardware can be easily attached.



Solid Seat Pan & Hardware Kit (RSSP-N-HARD)

2.2

EXTRA VICAIR® AIR CELLS

MSRP \$43.00 / 50 air cell pack



Pack of 50 Vicair® Air Cells (AIRCELL50)

QUESTIONS? PLEASE CONTACT CUSTOMER SUPPORT FOR ASSISTANCE. | 800.736.0925

3 BODILINK® LATERAL PELVIC/THIGH SUPPORT HARDWARE & PADS

Please select sizes in the appropriate fabric & style charts below. Contact Customer Support for custom sizes that are not listed below 800.736.0925.

3.1 PREMIUM PAD SIZE & SHAPE

HCPCS Code: E0953 MSRP \$62.00

- You may make one selection per column (Left, Extra Left, Right, and Extra Right) in section 3.1.
- Make a fabric selection in 3.2.

*Length (L) refers to the actual size dimension of the support from top to bottom edge. Depth (D) refers to the actual size dimension from anterior to posterior edge.

STYLE	SIZE	LEFT	EXTRA LEFT	RIGHT	EXTRA RIGHT
	3.5" L x 4" D	BL-LPTSP2Z-3L4D-LH	BL-LPTSP2Z-3L4D-LH	BL-LPTSP2Z-3L4D-RH	BL-LPTSP2Z-3L4D-RH
	3.5" L x 8" D	BL-LPTSP2Z-3L8D-LH	BL-LPTSP2Z-3L8D-LH	BL-LPTSP2Z-3L8D-RH	BL-LPTSP2Z-3L8D-RH
	3.5" L x 12" D	BL-LPTSP2Z-3L12D-LH	BL-LPTSP2Z-3L12D-LH	BL-LPTSP2Z-3L12D-RH	BL-LPTSP2Z-3L12D-RH
	5.5" L x 6" D	BL-LPTSP2Z-5L6D-LH	BL-LPTSP2Z-5L6D-LH	BL-LPTSP2Z-5L6D-RH	BL-LPTSP2Z-5L6D-RH

3.2 PREMIUM PAD COVER WITH FOAM INSERT

COVER OPTIONS	MSRP	LEFT	EXTRA LEFT	RIGHT	EXTRA RIGHT
COMFORT-TEK®	\$0.00/ea.	LPTS-P2-COMFORT-FM	LPTS-P2-COMFORT-FM	LPTS-P2-COMFORT-FM	LPTS-P2-COMFORT-FM
STRETCH-AIR®	\$0.00/ea.	LPTS-P2-STRETCH-FM	LPTS-P2-STRETCH-FM	LPTS-P2-STRETCH-FM	LPTS-P2-STRETCH-FM
GLIDEWEAR®	\$13.00/ea.	LPTS-P2-GLIDE-FM	LPTS-P2-GLIDE-FM	LPTS-P2-GLIDE-FM	LPTS-P2-GLIDE-FM

COMFORT-TEK®
FOR FLUID PROTECTION & AN EASILY CLEANED SURFACE.

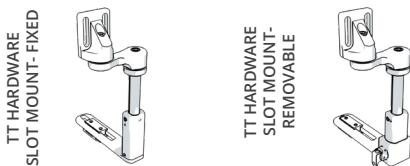
STRETCH-AIR®
FOR USER COMFORT & HEAT DISSIPATION.

FOR SKIN PROTECTION & SHEAR REDUCTION. NOT FLUID RESISTANT.

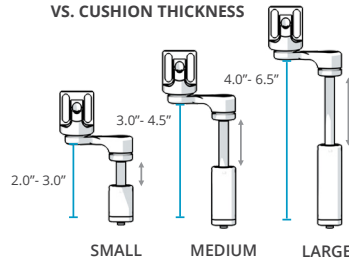
- You may make one selection per column (Left, Extra Left, Right, and Extra Right) in section 3.3 from group A, B, or C.
- TT long extension arms (section 3.4) will only work with TT style hardware.

3.3 BODILINK® LATERAL PELVIC/THIGH SUPPORT HARDWARE

A. TT HARDWARE, SLOT MOUNT



HARDWARE SIZE VS. CUSHION THICKNESS



HARDWARE SIZE	MAX CUSHION THICKNESS CLEARANCE	RECOMMENDED CUSHION THICKNESS
SMALL	3.0"	2.0" - 3.0"
MEDIUM	4.5"	3.0" - 4.5"
LARGE	6.5"	4.0" - 6.5"

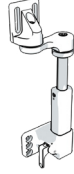
	SIZE	MSRP	LEFT	EXTRA LEFT	RIGHT	EXTRA RIGHT
FIXED	SMALL	\$141.00	BL-LPTS-TT1FXSL1-LH	BL-LPTS-TT1FXSL1-LH	BL-LPTS-TT1FXSL1-RH	BL-LPTS-TT1FXSL1-RH
	MEDIUM	\$141.00	BL-LPTS-TT1FXSL2-LH	BL-LPTS-TT1FXSL2-LH	BL-LPTS-TT1FXSL2-RH	BL-LPTS-TT1FXSL2-RH
	LARGE	\$141.00	BL-LPTS-TT1FXSL3-LH	BL-LPTS-TT1FXSL3-LH	BL-LPTS-TT1FXSL3-RH	BL-LPTS-TT1FXSL3-RH
REMOVABLE E1028	SMALL	\$248.00	BL-LPTS-TT1RMSL1-LH	BL-LPTS-TT1RMSL1-LH	BL-LPTS-TT1RMSL1-RH	BL-LPTS-TT1RMSL1-RH
	MEDIUM	\$248.00	BL-LPTS-TT1RMSL2-LH	BL-LPTS-TT1RMSL2-LH	BL-LPTS-TT1RMSL2-RH	BL-LPTS-TT1RMSL2-RH
	LARGE	\$248.00	BL-LPTS-TT1RMSL3-LH	BL-LPTS-TT1RMSL3-LH	BL-LPTS-TT1RMSL3-RH	BL-LPTS-TT1RMSL3-RH

B. TT HARDWARE, POWER MOUNT

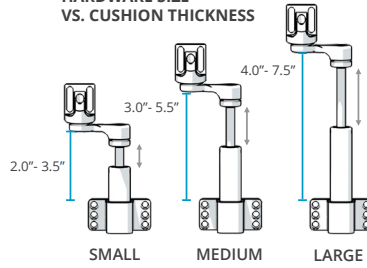
TT HARDWARE
POWER MOUNT - FIXED



TT HARDWARE
POWER MOUNT -
REMOVABLE



HARDWARE SIZE
VS. CUSHION THICKNESS



HARDWARE SIZE	MAX CUSHION THICKNESS CLEARANCE	RECOMMENDED CUSHION THICKNESS
SMALL	3.5"	2.0" - 3.5"
MEDIUM	5.5"	3.0" - 5.5"
LARGE	7.5"	4.0" - 7.5"

	SIZE	MSRP	LEFT		EXTRA LEFT		RIGHT		EXTRA RIGHT	
	FIXED	SMALL	\$185.00	BL-LPTS-TT1FXPWL1-LH	BL-LPTS-TT1FXPWL1-LH	BL-LPTS-TT1FXPWL1-RH	BL-LPTS-TT1FXPWL1-RH	BL-LPTS-TT1FXPWL2-LH	BL-LPTS-TT1FXPWL2-LH	BL-LPTS-TT1FXPWL2-RH
	MEDIUM	\$185.00	BL-LPTS-TT1FXPWL2-LH	BL-LPTS-TT1FXPWL2-LH	BL-LPTS-TT1FXPWL2-RH	BL-LPTS-TT1FXPWL2-RH	BL-LPTS-TT1FXPWL3-LH	BL-LPTS-TT1FXPWL3-LH	BL-LPTS-TT1FXPWL3-RH	BL-LPTS-TT1FXPWL3-RH
	LARGE	\$185.00	BL-LPTS-TT1FXPWL3-LH	BL-LPTS-TT1FXPWL3-LH	BL-LPTS-TT1FXPWL3-RH	BL-LPTS-TT1FXPWL3-RH				
OR										
REMOVABLE E1028	SMALL	\$285.00	BL-LPTS-TT1RMPWL1-LH	BL-LPTS-TT1RMPWL1-LH	BL-LPTS-TT1RMPWL1-RH	BL-LPTS-TT1RMPWL1-RH	BL-LPTS-TT1RMPWL2-LH	BL-LPTS-TT1RMPWL2-LH	BL-LPTS-TT1RMPWL2-RH	BL-LPTS-TT1RMPWL2-RH
	MEDIUM	\$285.00	BL-LPTS-TT1RMPWL2-LH	BL-LPTS-TT1RMPWL2-LH	BL-LPTS-TT1RMPWL2-RH	BL-LPTS-TT1RMPWL2-RH	BL-LPTS-TT1RMPWL3-LH	BL-LPTS-TT1RMPWL3-LH	BL-LPTS-TT1RMPWL3-RH	BL-LPTS-TT1RMPWL3-RH
	LARGE	\$285.00	BL-LPTS-TT1RMPWL3-LH	BL-LPTS-TT1RMPWL3-LH	BL-LPTS-TT1RMPWL3-RH	BL-LPTS-TT1RMPWL3-RH				

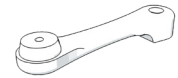
TT HARDWARE, POWER MOUNT OPTION

NOTE: If choosing the Power Mount Hardware, choose the appropriate power mount type below.

POWER MOUNT	MSRP	PART NUMBER
QUANTUM	add \$0.00	LPTS-TT1-PW1
PERMOBIL	add \$0.00	LPTS-TT1-PW2
QUICKIE	add \$0.00	LPTS-TT1-PW3
ROVI	add \$0.00	LPTS-TT1-PW4
AVID REHAB	add \$0.00	LPTS-TT1-PW5

3.4 TT LONG EXTENSION ARM 4"

MSRP \$37.00/arm



LEFT	EXTRA LEFT	RIGHT	EXTRA RIGHT
BL-LPTS-TT1LARM4	BL-LPTS-TT1LARM4	BL-LPTS-TT1LARM4	BL-LPTS-TT1LARM4

4 BODILINK® MEDIAL KNEE/THIGH SUPPORT HARDWARE & PADS

- You may make one selection per column.
- Choose between wedge or oval in 4.1.
- Choose a cover material in 4.2.
- Choose hardware size in 4.3.

4.1 PAD SIZE & SHAPE

HCPCS CODING: E0957 MSRP \$130.00

STYLE	SIZE	PART NUMBER
<p>WEDGE</p>	2.5"W x 3.5"D	BL-MKTSP1-3W4D
	3.5"W x 5"D	BL-MKTSP1-4W5D
	4"W x 6"D	BL-MKTSP1-4W6D
<p>OVAL</p>	2.5"W x 3.5"D	BL-MKTSP2-3W4D
	3.5"W x 5"D	BL-MKTSP2-4W5D
	5"W x 6"D	BL-MKTSP2-5W6D

4.2 PAD COVER MATERIAL

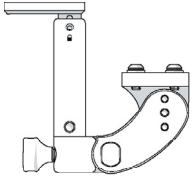
<p>GlideWear® INNOVATIVE SKIN PROTECTION</p>	FOR SKIN PROTECTION & SHEAR REDUCTION. NOT FLUID RESISTANT.
<p>COMFORT-TEK®</p>	FOR FLUID PROTECTION & AN EASILY CLEANED SURFACE.
<p>STRETCH-AIR®</p>	FOR USER COMFORT & HEAT DISSIPATION.

GlideWear® (MKTSP-GLIDE) (add \$15.00)
Comfort-Tek® (MKTSP-COMFORT)
Stretch-Air® (MKTSP-STRETCH)

4.3

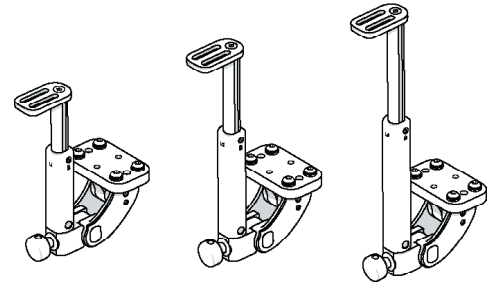
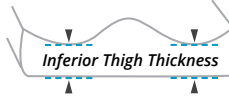
MEDIAL KNEE/THIGH SUPPORT SWING AWAY HARDWARE

HCPCS CODING: E1028 MSRP \$180.00



SIZE	PART NUMBER
SMALL	BL-MKTS-ST1SASL1
MEDIUM	BL-MKTS-ST1SASL2
LARGE	BL-MKTS-ST1SASL3

*Swing Away Hardware only, not available in Fixed Hardware
 **MKTS Hardware must be mounted to Removable Solid Seat Pan in section 2.4
 ***If Leg Length Discrepancy is needed on Removable Solid Seat Pan, Offset Orientation must be selected



SMALL

MEDIUM

LARGE

SIZE	RECOMMENDED INFERIOR THIGH THICKNESS
Small	1.00" - 3.00"
Medium	2.00" - 5.00"
Large	3.00" - 7.00"