



**LONG TERM CARE  
SEATING & POSITIONING HANDBOOK**



Comfort Company manufactures seating and postural support systems, designed for people with a wide range of rehabilitation needs. Whether pediatric, geriatric or bariatric needs, we are committed to providing our customers with quality products designed for comfort, durability and ease of use. Our vision is to lead in the development, manufacturing and delivery of the most innovative seating & positioning products which provide the highest level of comfort, functionality, and quality of life for end users.

#### OUR REGISTERED BRANDS

Comfort Company®, Curve®, Elements®, Kwik Strap®, Quadra3D®, QuadraGel®, IncrediBack®, Comfort Arm®, and Complete Feet® are all registered trademarks of Comfort Company.

Vicair® is a registered trademark of Vicair Inc.

GlideWear® is a registered trademark of Tamarack Habilitation Technologies Inc.



**CUSTOMER SERVICE**  
509 South 22<sup>nd</sup> Avenue  
Bozeman, MT 59718  
(800) 564-9248



**MANUFACTURING**  
1930 S Calhoun Road  
New Berlin, WI 53151  
(262) 432-0830



**1.800.564.9248**



1.406.522.8563



sales@comfortcompany.com



www.ComfortCompany.com

## TABLE OF CONTENTS

### SEATING SURFACES

2	Vector X	9	Saddle 7 Series
2	Vector	9	Support Pro 7 Series
3	Adjuster X	10	Curve
3	Adjuster	10	Elements with Gel
4	Liberty X	11	Tru Form
4	Liberty	11	Coccyx Cutout
5	Versa X	11	No Lean
6	Shield	12	Combination Seat & Back
7	Saddle	12	Comfort Gel
8	Support Pro	12	Micro Strand

### SEATING ACCESSORIES

13	Rigid Insert	13	Incontinent Proof Liner
13	Replacement Cover	13	Smart Seat

### EXPRESS COMFORT

14	Express Comfort Foam	15	Express Comfort Visco
14	Express Comfort Gel	15	Express Comfort Contoured Visco
14	Express Comfort Contoured Foam	15	Express Comfort Contoured Gel

### BACK CARE

16	IncrediBack	19	SideHugger
18	IncrediHugger	19	Comfort Back
18	Elements Back	19	Contour Visco Back

### LATERALS, HEADREST, & AMP

20	Lateral Support Assembly	21	Hip Bolster
20	Sideminder	22	Sideminder Headrest
21	Trunk Support	22	Swing-Away Amp
21	Flat Top Lateral Roll		

### ARM & FOOT CARE

23	Comfort Arm	25	Single Foot
24	Complete Feet	25	Maxxcare Heel Pro Evolution

### HALO SAFETY RING

26	Universal Halo	27	Circle Pad Protector
27	Halo ALC		

### TRAYS

28	Durasoft Lap Tray	28	Econasoft Lap Tray
28	Durasoft Half Tray	28	Flip-up Half Tray

### POSITIONING & BED CARE

29	Abduction Pillow	29	Gait Belt
29	Leg Abductor Wedge	29	Safe & Secure
27	Sit 'n Place	29	Gap Space Eliminator

# RISK/WOUND ASSESSMENT GUIDELINES

“Pressure Ulcer is a localized injury to the skin and/or underlying tissue usually over a bony prominence, as a result of pressure, or pressure in combination with shear” (“International NPUAP,” 2010, p. 19).\*

\*Pressure ulcer. (2010). In Pressure Ulcer Prevention & Treatment: Clinical Practice Guideline. Washington D.C.: National Pressure Ulcer Advisory Panel.

**Category/Stage I:** Intact skin with non-blanchable redness of localized area usually over a bony prominence.

**Category/Stage II:** Partial thickness skin loss (or blister) presenting as a shallow open ulcer with a red pink wound bed.

**Category/Stage III:** Full thickness skin loss, subcutaneous fat may be visible but bone, tendon or muscle are not exposed.

**Category/Stage IV:** Full thickness tissue loss with exposed bone, tendon or muscle e.g. fascia, tendon or joint capsule. Often includes undermining and tunneling.

## HIGH RISK



AND/OR CATEGORY/STAGE III - IV  
BRADEN SCALE <11

**PELVIC & LEG POSITIONING**

Up to Category/Stage IV

## MEDIUM RISK



AND/OR CATEGORY/STAGE I - II  
BRADEN SCALE 12 - 14

**MODERATE PELVIC &  
LEG POSITIONING**

Up to Category/Stage II

## LOW RISK



AND/OR CATEGORY/STAGE I  
BRADEN SCALE >15

**GENERAL USE**

Up to Category/Stage I

## Does the individual need positioning?

### YES

**VECTOR X**  
HIGH RISK



**VECTOR**  
HIGH RISK



**ADJUSTER X**  
HIGH RISK



**ADJUSTER**  
HIGH RISK



**LIBERTY X**  
HIGH RISK



**VERSA X**  
HIGH RISK



**SHIELD**  
HIGH RISK



**SADDLE**  
HIGH RISK

*Available with Gel Option*



**SADDLE 7**  
HIGH RISK

*Available with Gel Option*



### NO

**SUPPORT PRO 7**  
HIGH RISK

*Available with Gel Option*



### YES

**SUPPORT PRO WEDGE**  
MEDIUM RISK



**SUPPORT PRO ANTI-THRUST**  
MEDIUM RISK



**LIBERTY**  
MEDIUM RISK



### NO

**SUPPORT PRO ZERO ELEVATION**  
MEDIUM RISK



### YES

**CURVE**  
GENERAL USE



**NO LEAN**  
GENERAL USE



### NO

**ELEMENTS W/GEL**  
GENERAL USE



**TRU FORM**  
SKIN PROTECTION



**MICRO STRAND**  
GENERAL USE



**COCCYX CUTOUT**  
GENERAL USE



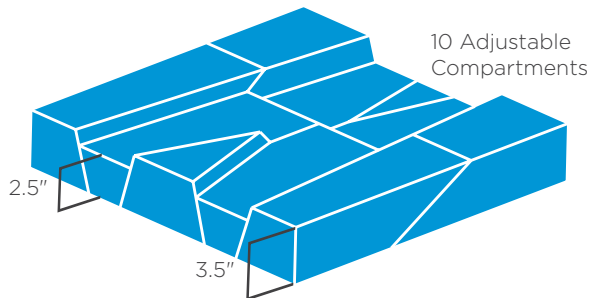
**COMBINATION SEAT & BACK**  
GENERAL USE



**COMFORT GEL**  
GENERAL USE



# VECTOR X



## ABOUT THE VECTOR X

- Designed with ten adjustable chambers making the Vector X the most comprehensive positioning cushion in the series.
- Coccyx, I.T. and Sacrum bony prominences each have a dedicated chamber that can be partially or fully off-loaded giving the maximum healing opportunity for any stage of wound.
- Split and elevated side chambers run front to back to provide independently adjustable chambers for accommodating lateral pelvic asymmetries as well as abduction through the thighs.
- Adjustable height medial thigh support chamber allows for the varied adduction needs for each user.
- The coccygeal bottom insert serves as a pelvic stabilizer and can quickly be adjusted to off-load the high risk, coccygeal and I.T. region through better loading of the greater trochanters.

## WEIGHT CAPACITY

All Sizes	550 lbs
-----------	---------

## STANDARD SIZES

	16" Wide	18" Wide	20" Wide	22" Wide	24" Wide
16" Deep	16 x 16	18 x 16	20 x 16	22 x 16	24 x 16
18" Deep	16 x 18	18 x 18	20 x 18	22 x 18	24 x 18
20" Deep	16 x 20	18 x 20	20 x 20	22 x 20	24 x 20

VECTOR X		
Cover Style	Stretch-Air	Comfort-Tek
Standard	VTX-S-WWDD	VTX-F-WWDD
With GlideWear®	VTX-SQ-WWDD	VTX-FQ-WWDD

WWDD TO BE REPLACED. WW = WIDTH & DD = DEPTH IN INCHES

# VECTOR & VECTOR LOW



## ABOUT THE VECTOR & VECTOR LOW

- Eight fully adjustable compartments provide a custom fit with maintenance free Comfort Cells.

VECTOR & VECTOR LOW			
Cover Style	Thickness	Stretch-Air	Comfort-Tek
Standard	3.5"	VT-S-WWDD	VT-F-WWDD
Low	2.5"	VT-SL-WWDD	VT-FL-WWDD

WWDD TO BE REPLACED. WW = WIDTH & DD = DEPTH IN INCHES  
Please refer to the standard size chart in the Vector X section for available sizes. Vector Low not available in 22" or 24" wide sizes.

## ABOUT THE ADJUSTER X

- Designed with eight adjustable chambers, the Adjuster X is the most comprehensive adjustable skin protection cushion on the market.
- Liner is made out of a breathable mesh material and allows the full liner with air cells to be washed and dried. Hot or cold settings may be used.
- I.T. bony prominences each have a dedicated chamber that can be partially or fully off-loaded giving the maximum healing opportunity for any stage wound.
- Independently adjustable lateral chambers in the rear accommodate lateral pelvic asymmetries or loading the greater trochanters.
- Front four chambers can be adjusted to handle seat surface height at front edge variances increasing heel contact for foot propellers, and altering the anti-thrust characteristics for better pelvic positioning.

## WEIGHT CAPACITY

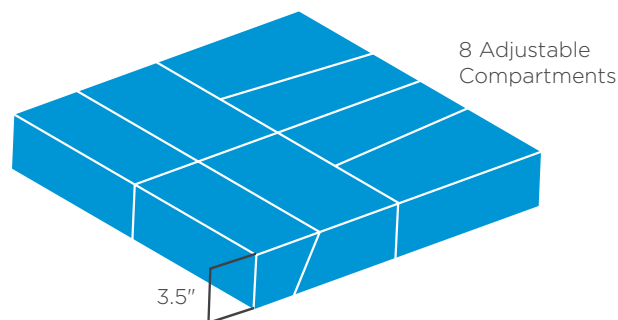
All Sizes 550 lbs

## STANDARD SIZES

	16" Wide	18" Wide	20" Wide	22" Wide	24" Wide
16" Deep	16 x 16	18 x 16	20 x 16	22 x 16	24 x 16
18" Deep	16 x 18	18 x 18	20 x 18	22 x 18	24 x 18
20" Deep	16 x 20	18 x 20	20 x 20	22 x 20	24 x 20

ADJUSTER X			
Cover Style	Stretch-Air	Comfort-Tek	
Standard	AJX-S-WWDD	AJX-F-WWDD	
With GlideWear®	AJX-SQ-WWDD	AJX-FQ-WWDD	

WWDD TO BE REPLACED. WW = WIDTH & DD = DEPTH IN INCHES



# ADJUSTER & ADJUSTER LOW

## ABOUT THE ADJUSTER & ADJUSTER LOW

- Five fully adjustable compartments provide a custom fit with maintenance free Comfort Cells.

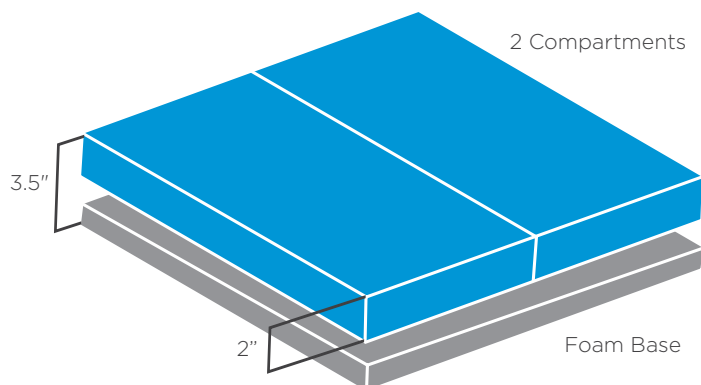
ADJUSTER & ADJUSTER LOW			
Cover Style	Thickness	Stretch-Air	Comfort-Tek
Standard	3.5"	AJ-S-WWDD	AJ-F-WWDD
Low	2.5"	AJ-SL-WWDD	AJ-FL-WWDD

WWDD TO BE REPLACED. WW = WIDTH & DD = DEPTH IN INCHES  
Please refer to the standard size chart in the Vector X section for available sizes. Vector Low not available in 22" or 24" wide sizes.



# LIBERTY X

**NEW**  
for  
**2015**



## ABOUT THE LIBERTY X

- The main cushion component is designed with a completely sealed PVC liner containing a front and rear chamber. The cushion liner holds Comfort Cells coated in a silicone lubricant giving them a slow moving yet fluid like motion when conforming to the patient.
- The liner also has an air valve, that when opened, allows the excess air to escape after a patient sits. Once the air has escaped and the cushion has taken on the fitted shape of the patient, the air valve can be closed and the cushion will retain its shape. The vacuum forming technique with the silicone coated Comfort Cells captures the patient's shape every time.
- A foam base is installed separately under the main cushion component to provide additional femoral support and trochanter loading to the main Vicair® cushion.
- A separate cover made of Comfort-Tek material covers the base foam with a waterproof zipper giving it superior incontinence protection and infection control. Foam should be removed while laundering cover.

## WEIGHT CAPACITY

All Sizes	550 lbs
-----------	---------

## STANDARD SIZES

	16" Wide	18" Wide	20" Wide
16" Deep	16 x 16	18 x 16	
18" Deep		18 x 18	20 x 18

LIBERTY X		
Cover Style	Stretch-Air	Comfort-Tek
Standard	LBX-S-WWDD	LBX-F-WWDD
With GlideWear®	LBX-SQ-WWDD	LBX-FQ-WWDD

WWDD TO BE REPLACED. WW = WIDTH & DD = DEPTH IN INCHES

# LIBERTY



## ABOUT THE LIBERTY

- Two compartment design diminishes the tendency of users to slide forward.
- Opening air valve allows cushion to be formed to each user.
- Front compartment acts as a wedge which inhibits the occurrence of shear forces.
- Lightweight easy-to-clean cushion is stable and reliable.

## STANDARD SIZES

	16" Wide	18" Wide	20" Wide
16" Deep	16 x 16	18 x 16	
18" Deep		18 x 18	20 x 18

## WEIGHT CAPACITY

All Sizes	330 lbs
-----------	---------

LIBERTY		
Solace Cover	Front	Rear
LB-F-WWDD-KS	2"	1.5"

WWDD TO BE REPLACED. WW = WIDTH & DD = DEPTH IN INCHES

## ABOUT THE VERSA X

- Designed with five adjustable chambers in the rear and a contoured molded base foam in the front. The Versa X is a hybrid air and foam cushion that offers extreme comfort and maximum healing opportunities for any stage of wound.
- Liner is made out of a breathable mesh material and allows the full liner with air cells to be washed and dried. Hot or cold settings may be used.
- Coccyx, I.T. and sacrum bony prominences each have a dedicated chamber that can be partially or fully off-loaded giving the maximum healing opportunity for any stage of wound.
- Independently adjustable lateral chambers in the rear accommodates lateral pelvic asymmetries.
- The molded foam cushion is extremely resilient and built with mild positioning features. This design offers the user exceptional stability and comfort while transferring.
- The coccygeal bottom insert serves as a pelvic stabilizer and can quickly be adjusted to off-load the high risk, coccygeal and I.T. region through better loading of the greater trochanters.

## WEIGHT CAPACITY

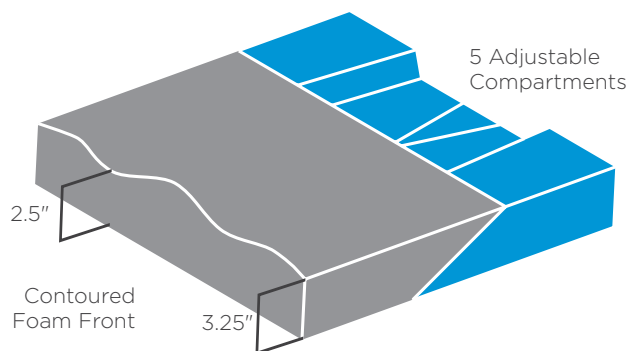
All Sizes	550 lbs
-----------	---------

## STANDARD SIZES

	16" Wide	18" Wide	20" Wide	22" Wide	24" Wide
16" Deep	16 x 16	18 x 16	20 x 16	22 x 16	24 x 16
18" Deep	16 x 18	18 x 18	20 x 18	22 x 18	24 x 18
20" Deep	16 x 20	18 x 20	20 x 20	22 x 20	24 x 20

VERSA X		
Cover Style	Stretch-Air	Comfort-Tek
Standard	VR5-S-WWDD	VRX-F-WWDD
With GlideWear®	VRX-SQ-WWDD	VRX-FQ-WWDD

WWDD TO BE REPLACED. WW = WIDTH & DD = DEPTH IN INCHES





## ABOUT THE SHIELD

- Maximum protection available at an affordable price
- Advanced level protection designed to assist in the prevention & healing of up to Stage IV pressure ulcers
- Sophisticated contoured surface combined with tapered leg abductors provides greater surface area to optimize skin protection and off load the greater trochanters.
- Two layers of high resiliency contoured foam, clinically designed to disperse the weight of the patient
- Memory foam topper for optimal patient comfort and maximum skin protection.

## WEIGHT CAPACITY

16" Wide	250 lbs	22" Wide	400 lbs
18" Wide	300 lbs	24" Wide	400 lbs
20" Wide	350 lbs		

## ABOUT GLIDEWEAR®

A new cover option adapted from leading prosthetics technology, GlideWear® is designed to promote healing and reduce the risk of Decubitus Ulcers through the use of the Shear Reduction Zone.



GlideWear® provides:

- Reduction of shear forces to increase skin protection
- 100% breathability for microclimate control
- Improved comfort from reduced friction

The GlideWear® technology option is available as an embedded upgrade to Stretch-Air & Comfort-Tek fabric options. Latex free.

U.S. GlideWear® Patent No. 8,646,459

## STANDARD SIZES

	16" Wide	18" Wide	20" Wide	22" Wide	24" Wide
16" Deep	16 x 16	18 x 16			
18" Deep	16 x 18	18 x 18	20 x 18	22 x 18	24 x 18
20" Deep					24 X 20

SHIELD	
Cover Style	Comfort-Tek
With GlideWear®	SHLD-FQA-WWDD

WWDD TO BE REPLACED. WW = WIDTH & DD = DEPTH IN INCHES

# SADDLE

## ABOUT THE SADDLE

- Deep lateral and medial leg contours promote postural alignment.
- Coccyx relief cutout unloads bony prominences.
- Waterfall front eliminates pressure points in leg trough.
- Two layers of high resiliency foam provide increased comfort and decrease the probability of pressure sores.
- Large radius bottom provides versatile surface for sling of flat seated wheelchair.
- Optional QuadraGel pack inset.
- Kwik Strap loops around vertical canes to securely attach cushion to wheelchair during transfers.

## QUADRAGEL® PACK

- The QuadraGel pack regulates body temperature and redistributes pressure for comfort.



## WEIGHT CAPACITY

16" Wide	250 lbs	22" Wide	400 lbs
18" Wide	300 lbs	24" Wide	400 lbs
20" Wide	350 lbs		

## STANDARD SIZES

	16" Wide	18" Wide	20" Wide	22" Wide	24" Wide
16" Deep	16 x 16	18 x 16	20 x 16		
18" Deep	16 x 18	18 x 18	20 x 18	22 x 18	24 x 18
20" Deep		18 x 20			

SADDLE		
Cushion Style	Solace	Solace with Gel
Zero Elevation	52S <b>WWDD</b>	52SG <b>WWDD</b>
Wedge	55S <b>WWDD</b>	55SG <b>WWDD</b>
Anti-Thrust	57S <b>WWDD</b>	57SG <b>WWDD</b>

**WWDD** TO BE REPLACED. **WW** = WIDTH & **DD** = DEPTH IN INCHES



## ZERO ELEVATION

The Saddle Zero Elevation allows for greater freedom of movement for standard positioning issues.



## ANTI-THRUST

The Saddle Anti-Thrust provides anterior buildup at midline to prevent forward ischial migration.



## WEDGE

The Saddle Wedge controls forward leaning by adding slight anterior height.

# SUPPORT PRO

TOP  
SELLER



## ZERO ELEVATION

The Support Pro Zero Elevation allows for greater freedom of movement for standard positioning issues.



## ANTI-THRUST

The Support Pro Anti-Thrust provides anterior buildup at midline to prevent forward ischial migration.



## WEDGE

The Support Pro Wedge controls forward leaning by adding slight anterior height.

## ABOUT THE SUPPORT PRO

- Non-contoured seating surface allows for easy transfers.
- Optional QuadraGel pack insert.
- Waterfall front eliminates pressure points in leg trough.
- Large radius bottom provides versatile surface for sling or flat seated wheelchair.
- Kwik Strap loops around vertical canes to securely attach cushion to wheelchair during transfers.
- Coccyx relief area unloads bony prominences.
- Revolutionary Moleculon® foam provides increased comfort and reduces potential high-pressure areas.

## QUADRAGEL® PACK

- The QuadraGel pack regulates body temperature and redistributes pressure for comfort.



## WEIGHT CAPACITY

16" Wide	250 lbs	20" Wide	350 lbs
18" Wide	300 lbs	22" Wide	400 lbs

## STANDARD SIZES

	16" Wide	18" Wide	20" Wide	22" Wide
16" Deep	16 x 16	18 x 16		
18" Deep	16 x 18	18 x 18	20 x 18	22 x 18

## ZERO ELEVATION

W x D	Zero Elevation	Zero Elevation w/Gel	Zero Elevation w/Abductor	Zero Elevation w/Abductor & Gel
16" x 16"	52A	52GA	52PA	52PGA
16" x 18"	52A18	52GA18	52PA18	52PGA18
18" x 16"	52B16	52GB16	52PB16	52PGB16
18" x 18"	52B	52GB	52PB	52PGB
20" x 18"	52C	52GC	52PC	52PGC
22" x 18"	52D	52GD	52PD	52PGD

## WEDGE

W x D	Wedge	Wedge w/Gel	Wedge w/Abductor	Wedge w/Abductor & Gel
16" x 16"	55A	55GA	55PA	55PGA
16" x 18"	55A18	55GA18	55PA18	55PGA18
18" x 16"	55B16	55GB16	55PB16	55PGB16
18" x 18"	55B	55GB	55PB	55PGB
20" x 18"	55C	55GC	55PC	55PGC
22" x 18"	55D	55GD	55PD	55PGD

## ANTI-THRUST

W x D	Anti-Thrust	Anti-Thrust w/Gel	Anti-Thrust w/Abductor	Anti-Thrust w/Abductor & Gel
16" x 16"	57A	57GA	57PA	57PGA
16" x 18"	57A18	57GA18	57PA18	57PGA18
18" x 16"	57B16	57GB16	57PB16	57PGB16
18" x 18"	57B	57GB	57PB	57PGB
20" x 18"	57C	57GC	57PC	57PGC
22" x 18"	57D	57GD	57PD	57PGD

# SADDLE 7 SERIES

## BARIATRIC CUSHION

### ABOUT THE SADDLE 7 SERIES

- Deep lateral and medial leg contours promote postural alignment.
- Waterfall front eliminates pressure points in leg trough.
- 750 lbs weight capacity dual layer foam provides increased comfort and decreases the probability of pressure sores.
- Optional QuadraGel® pack insert.
- Coccyx relief area unloads bony prominences.
- Kwik Strap loops around vertical canes to securely attach cushion to wheelchair during transfers.

### WEIGHT CAPACITY

All Sizes	750 lbs
-----------	---------

### STANDARD SIZES

	22" Wide	24" Wide	26" Wide	28" Wide	30" Wide
18" Deep	22 x 18	24 x 18	26 x 18	28 x 18	30 x 18
20" Deep	22 x 20	24 x 20	26 x 20	28 x 20	30 x 20

SADDLE 7 SERIES	
Without QuadraGel®	With QuadraGel®
53S-WWDD-B	53SG-WWDD-B

WWDD TO BE REPLACED. WW = WIDTH & DD = DEPTH IN INCHES



# SUPPORT PRO 7 SERIES

## BARIATRIC CUSHION

### ABOUT THE SUPPORT PRO 7 SERIES

- Non-contoured seating surface allows for easy transfers.
- Waterfall front eliminates pressure points in leg trough.
- 750 lbs weight capacity foam provides increased comfort and reduces potential high-pressure areas.
- Optional QuadraGel® pack insert.
- Coccyx relief area unloads bony prominences.
- Kwik Strap loops around vertical canes to securely attach cushion to wheelchair during transfers.

### QUADRAGEL® PACK

- The QuadraGel pack regulates body temperature and redistributes pressure for comfort.



### WEIGHT CAPACITY

All Sizes	750 lbs
-----------	---------

### STANDARD SIZES

	22" Wide	24" Wide	26" Wide	28" Wide	30" Wide
18" Deep	22 x 18	24 x 18	26 x 18	28 x 18	30 x 18
20" Deep	22 x 20	24 x 20	26 x 20	28 x 20	30 x 20

SUPPORT PRO 7 SERIES	
Without QuadraGel®	With QuadraGel®
53S-WWDD-B	53SG-WWDD-B

WWDD TO BE REPLACED. WW = WIDTH & DD = DEPTH IN INCHES



# CURVE



## ABOUT THE CURVE

- Medial thigh separator promotes postural alignment.
- Mild anti-thrust shelf promotes postural stability and forward migration.
- High density, molded foam increases surface area reducing potential high-pressure areas.
- All Curves now come standard with non-skid bottom and hook/loop connection.

## WEIGHT CAPACITY

10" - 12" Wide	100 lbs	18" Wide	300 lbs
14" Wide	150 lbs	20" Wide	350 lbs
16" Wide	250 lbs	22" Wide & Wider	400 lbs

## STANDARD SIZES

	16" Wide	18" Wide	20" Wide	22" Wide	24" Wide
16" Deep	16 x 16	18 x 16	20 x 16	22 x 16	24 x 16
18" Deep	16 x 18	18 x 18	20 x 18	22 x 18	24 x 18
20" Deep	16 x 20	18 x 20	20 x 20	22 x 20	24 x 20

## CURVE

Solace Cover

CU-FV-WWDD

WWDD TO BE REPLACED. WW = WIDTH & DD = DEPTH IN INCHES

# ELEMENTS WITH GEL

#1  
GENERAL  
USE



## ABOUT THE ELEMENTS WITH GEL

- Single layer foam construction contours to the user's body, reducing high pressure areas.
- Inset QuadraGel pack.
- Comes standard with non-skid bottom and hook/loop connection.

## QUADRAGEL® PACK

- The QuadraGel pack regulates body temperature and redistributes pressure for comfort.

## WEIGHT CAPACITY

16" Wide	250 lbs	20" Wide	350 lbs
18" Wide	300 lbs	22" Wide & Wider	400 lbs

## STANDARD SIZES

	16" Wide	18" Wide	20" Wide	22" Wide	24" Wide
16" Deep	16 x 16	18 x 16	20 x 16	22 x 16	24 x 16
18" Deep	16 x 18	18 x 18	20 x 18	22 x 18	24 x 18
20" Deep	16 x 20	18 x 20	20 x 20	22 x 20	24 x 20

## ELEMENTS WITH GEL

Thickness	Stretch-Air	Comfort-Tek
2" Thick	46GS-WWDD-B	46G-WWDD-B
3" Thick	463GS-WWDD-B	463G-WWDD-B

WWDD TO BE REPLACED. WW = WIDTH & DD = DEPTH IN INCHES

# TRU FORM

## ABOUT THE TRU FORM

- Waterfall front eliminates pressure points in leg trough
- Kwik strap loops around vertical canes to securely attach cushion to wheelchair during transfers
- Visco memory foam molds to user's anatomical curvature
- Three layer foam construction sandwiches Visco Memory Foam between two layers of high resiliency foam for maximum pressure relief and protection from bottoming out.

## VISCO MEMORY FOAM

- Four pound Visco foam contours to the user's body, promoting maximum skin protection.

## WEIGHT CAPACITY

16" Wide	250 lbs
18" Wide & Wider	300 lbs

## STANDARD SIZES

	16" Wide	18" Wide	20" Wide	22" Wide	24" Wide
16" Deep	16 x 16	18 x 16	20 x 16		
18" Deep	16 x 18	18 x 18	20 x 18	22 x 18	24 x 18

## TRU FORM

Thickness	Part Number
3"	VIS3-WWDD

WWDD TO BE REPLACED. WW = WIDTH & DD = DEPTH IN INCHES



# COCCYX CUTOUT

## ABOUT THE COCCYX CUTOUT

- High quality molded foam construction with round bottom.
- Protects coccyx from contacting seating surface.
- Waterfall front eliminates pressure points and provides comfort on user's legs.

## STANDARD SIZES

	16" Wide	18" Wide	20" Wide
16" Deep	16 x 16	18 x 16	
18" Deep			20 x 18

## COCCYX CUTOUT

Solace Cover	WC Size
41A-CCX	16"
41B-CCX	18"
41C-CCX	20"



# NO LEAN

## ABOUT THE NO LEAN

- Features left or right ischial recess.
- Waterfall front eliminates pressure points in leg trough.
- Round bottom discourages "hammock effect" in sling style chairs.

## NO LEAN

Left Recess	Right Recess	Recess Depth	WC Size
6310A	6210A	1"	16"
6310B	6210B	1"	18"
6310C	6210C	1"	20"



# COMBINATION SEAT & BACK



## ABOUT THE COMBINATION SEAT & BACK

- Provides full padding protection to the user.
- Easily installs in front of existing wheelchair sling back.
- Cushion has 16" depth and backrest has 17" height.

### STANDARD SIZES

	16" Wide	18" Wide	20" Wide
16" Deep	16 x 16	18 x 16	
18" Deep			20 x 18

### COMBINATION SEAT & BACK

Solace Cover

CB-WWDD

WWDD TO BE REPLACED. WW = WIDTH & DD = DEPTH IN INCHES

# COMFORT GEL



## ABOUT THE COMFORT GEL

- Comfort Gel utilizes an unique formation to prevent heat buildup and reduces shear forces in a low profile design.
- 5/8" thick cushion
- Optional foam layer increases user's support & provides comfort.
- Kwik Straps prevent the cushion from moving and provides a handle to carry the cushion.

### STANDARD SIZES

	16" Wide	18" Wide
16" Deep	16 x 16	18 x 16

### COMFORT GEL

Comfort Gel	Comfort Gel & Foam	W x D	WC Size
GEL-1616	GELFM-1616	16" x 16"	16"
GEL-1816	GELFM-1816	18" x 16"	18"

# MICRO STRAND



## ABOUT THE MICRO STRAND

- Micro strand technology is 100% breathable allowing for air transfer and 100% incontinent proof.
- Constructed using micro strand weave that provides long lasting support and comfort.
- Micro strands will not retain heat or break down from moisture.

### COVER STYLE

- 3D Spacers mesh fabric facilitates air ventilation through the Micro Strand cushion. The open weave design enhances the specialized features of the cushion while remaining lightweight, durable, and machine washable.

### STANDARD SIZES

	16" Wide	18" Wide	20" Wide
16" Deep	16 x 16	18 x 16	
18" Deep			20 x 18

### MICRO STAND

Solace

PE-WWDD

WWDD TO BE REPLACED. WW = WIDTH & DD = DEPTH IN INCHES

# SEATING ACCESSORIES

## RIGID INSERT



### ABOUT THE RIGID INSERT

- Designed to fit under all Comfort Company cushions, inside the cover.
- Eliminates “hammock” effect in outstretched wheelchair upholstery and provides extra support for heavier users.

#### RIGID INSERT

Part Number	Actual W x L	Cushion Size
RID1616	15 x 15	16"
RID1618	15 x 17	16"
RID1620	15 x 19	16"
RID1816	17 x 15	18"
RID1818	17 x 17	18"
RID1820	17 x 19	18"
RID2016	19 x 15	20"
RID2018	19 x 17	20"
RID2020	19 x 19	20"
RID2216	21 x 15	22"
RID2218	21 x 17	22"
RID2220	21 x 19	22"
RID2416	23 x 15	24"
RID2418	23 x 17	24"
RID2420	23 x 19	24"

## REPLACEMENT COVER



### ABOUT THE REPLACEMENT COVER

- Most Comfort Company LTC products come standard with Solace fabric. Replacement covers are available in Solace or Stretch-Air options.

The Solace fabric is engineered for pressure relief and comfort. Multi-dimensional stretch alleviates pressure on bony prominences. It is fluid-proof and can easily be cleaned with detergent.

### ORDERING INFORMATION

- Please contact Customer Service for order or for more information, 1-800-564-9248
- Or order online at [www.comfortcompany.com](http://www.comfortcompany.com)

## INCONTINENT PROOF LINER



### ABOUT THE INCONTINENT PROOF LINER

- Provides extra incontinence protection for any Comfort Company cushion.
- The liner may be used as an extra cover while the outer cover is being washed.
- Please order Incontinent Proof Liner in conjunction with a cushion

#### INCONTINENT PROOF LINER

Part Number	W x L	WC Size	Part Number	W x L	WC Size
BINC-1616-CV	16 x 16	16"	BINC-2216-CV	22 x 16	22"
BINC-1618-CV	16 x 18	16"	BINC-2218-CV	22 x 18	22"
BINC-1620-CV	16 x 20	16"	BINC-2220-CV	22 x 20	22"
BINC-1816-CV	18 x 16	18"	BINC-2416-CV	24 x 16	24"
BINC-1818-CV	18 x 18	18"	BINC-2418-CV	24 x 18	24"
BINC-1820-CV	18 x 20	18"	BINC-2420-CV	24 x 20	24"
BINC-2016-CV	20 x 16	20"			
BINC-2018-CV	20 x 18	20"			
BINC-2020-CV	20 x 20	20"			

## SMART SEAT



### ABOUT THE SMART SEAT®

- Lowers seating surface for foot propellers.
- Easy to install; no tools required.
- Tilts forward 3" and back 3".

### WEIGHT CAPACITY

All Sizes	300 lbs
-----------	---------

### PART NUMBERS

7/8" Tubing	1" Tubing	WC Size
78AA	781AA	16"
78A	781A	18"
78B	781B	20"

# EXPRESS COMFORT

## EXPRESS COMFORT GEL



SHOWN  
WITHOUT  
COVER

### ABOUT THE EXPRESS COMFORT GEL

- Single layer foam construction contours to the user's body, reducing high pressure areas.
- Recessed gel pack helps regulate body temperature, redistributes pressure for comfort, and provides a stable seating surface while maintaining appropriate gel placement.

#### EXPRESS COMFORT FOAM

Part # / 2" Thick	Part # / 3" Thick	W x D	Wt. Limit
401GA-EC	403G1616-EC	16" x 16"	250 lbs.
401GA18-EC	403G1618-EC	16" x 18"	250 lbs.
401GB-EC	403G1816-EC	18" x 16"	300 lbs.
401GB18-EC	403G1818-EC	18" x 18"	300 lbs.
401GC-EC	403G2016-EC	20" x 16"	350 lbs.
401GC18-EC	403G2018-EC	20" x 18"	350 lbs.
401GD18-EC	403G2218-EC	22" x 18"	400 lbs.

## EXPRESS COMFORT FOAM



SHOWN  
WITHOUT  
COVER

### ABOUT THE EXPRESS COMFORT FOAM

- Single layer foam construction contours to the user's body, reducing high pressure areas.

#### EXPRESS COMFORT FOAM

Part # / 2" Thick	Part # / 3" Thick	W x D	Wt. Limit
47A-EC	473-1616-EC	16" x 16"	250 lbs.
47B-EC	473-1816-EC	18" x 16"	300 lbs.
47B18-EC	473-1818-EC	18" x 18"	300 lbs.
47C-EC	473-2016-EC	20" x 16"	350 lbs.
47C18-EC	473-2018-EC	20" x 18"	350 lbs.
47D18-EC	473-2218-EC	22" x 18"	400 lbs.

## EXPRESS COMFORT CONTOURED FOAM



SHOWN  
WITHOUT  
COVER

### ABOUT THE EXPRESS COMFORT CONTOURED FOAM

- High density, molded foam increases surface area reducing potential high pressure areas
- Single-layer foam construction contours to the user's body, reducing high pressure areas

#### EXPRESS COMFORT CONTOURED FOAM

Part Number	W x D	Wt. Limit
21-1616-EC	16" x 16"	250 lbs.
21-1816-EC	18" x 16"	300 lbs.
21-1818-EC	18" x 18"	300 lbs.
21-2018-EC	20" x 18"	350 lbs.

## EXPRESS COMFORT VISCO



SHOWN  
WITHOUT  
COVER

### ABOUT THE EXPRESS COMFORT VISCO

- Visco surface conforms to user shape.
- Multi-layer foam provides comfort and skin protection.

#### EXPRESS COMFORT VISCO

Part # / 3" Thick	W x D	Wt. Limit
47V-1616-3EC	16" x 16"	250 lbs.
47V-1816-3EC	18" x 16"	300 lbs.
47V-2016-3EC	20" x 16"	350 lbs.
47V-2018-3EC	20" x 18"	350 lbs.
47V-2218-3EC	22" x 18"	400 lbs.

## EXPRESS COMFORT CONTOURED VISCO



SHOWN  
WITHOUT  
COVER

### ABOUT THE EXPRESS COMFORT CONTOURED VISCO

- High density, molded foam increases surface area reducing potential high pressure areas.
- Visco surface conforms to user shape.
- Multi-layer foam provides comfort and skin protection.

#### EXPRESS COMFORT VISCO

Part Number	W x D	Wt. Limit
20VA-EC	16" x 16"	250 lbs.
20VB-EC	18" x 18"	300 lbs.
20VC-EC	20" x 18"	350 lbs.
20VD18-EC	22" x 18"	400 lbs.

## EXPRESS COMFORT CONTOURED GEL



SHOWN  
WITHOUT  
COVER

### ABOUT THE EXPRESS COMFORT CONTOURED GEL

- High density, molded foam increases surface area reducing potential high pressure areas
- Visco surface conforms to user shape
- Multi-layer foam provides comfort and skin protection
- Recessed gel pack helps regulate body temperature, redistributes pressure for comfort, and provides a stable seating surface while maintaining appropriate gel placement.

#### EXPRESS COMFORT CONTOURED GEL

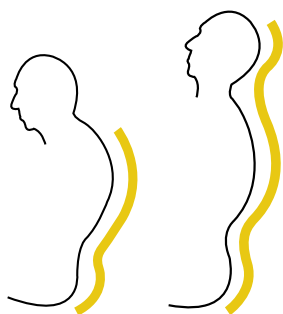
Part Number	W x D	Wt. Limit
20VGA-EC	16" x 16"	250 lbs.
20VGB-EC	18" x 18"	300 lbs.
20VGC-EC	20" x 18"	350 lbs.
20VGD18-EC	22" x 18"	400 lbs.

# INCREDIBACK®



## FOLDABLE BACK FOR COLLAPSIBLE WHEELCHAIRS

- Installation is made easy with a durable strapping system.
- The Incrediback® Moldable and Incrediback® Moldable Tall fold with the chair for easy storage and transportation.



## MOLDABLE STAYS

- Moldable stays are designed to support spinal curvature including: kyphosis, scoliosis, or other postural asymmetries.

PATENTED #6,733,074

## ABOUT THE INCREDIBACK®

- Patented moldable aluminum stays conform to and support the user's back.
- High resiliency foam comfortably contours to user's back for comfort and support.
- All models recline up to 30° (must use anti-tip bars when reclined).
- Fully adjustable for angle and height, with 2" of depth adjustment.
- Quick and easy installation, replaces current backrest.

## WEIGHT CAPACITY

All Sizes*	450 lbs
------------	---------

\*Wheelchair must have anti-tip bars.

## STANDARD SIZES

	15" Wide	17" Wide	19" Wide	21" Wide
21" Height	15 x 21	17 x 21	19 x 21	21 x 21
24" Height	15 x 24	17 x 24	19 x 24	21 x 24
34" Height	15 x 34	17 x 34	19 x 34	21 x 34

STANDARD MOLDABLE INCREDIBACK®			
Standard	Deep	W x H	WC Size
410A	414A	15 x 21	16"
410B	414B	17 x 21	18"
410C	414C	19 x 21	20"
410D	414D	21 x 21	22"

STANDARD RIGID INCREDIBACK®		
Standard	W x H	WC Size
420A	15 x 24	16"
420B	17 x 24	18"
420C	19 x 24	20"
420D	21 x 24	22"

TALL MOLDABLE INCREDIBACK®			
Standard	Deep	W x H	WC Size
410TA	414TA	15 x 34	16"
410TB	414TB	17 x 34	18"
410TC	414TC	19 x 34	20"
410TD	414TD	21 x 34	22"

TALL RIGID INCREDIBACK®		
Standard	W x H	WC Size
420TA	15 x 34	16"
420TB	17 x 34	18"
420TC	19 x 34	20"
420TD	21 x 34	22"

GROMMET STRAP - INCREDIBACK® ACCESSORY	
Part #	Product
20117	Replacement Grommet Strap

# INCREDIBACK® STYLES

## INCREDIBACK® MOLDABLE



### ABOUT THE MOLDABLE BACK

- The standard IncrediBack® is best for the wheelchair user who needs the support and comfort that a normal sling back cannot provide. The standard IncrediBack is angle and height adjustable. Moldable option folds with wheelchair.

## INCREDIBACK® RIGID



### ABOUT THE RIGID BACK

- Designed for the user who requires a solid reclining support in a wheelchair back. The Rigid Back offers adjustability in both height and angle.

## INCREDIBACK® DEEP



### ABOUT THE DEEP BACK

- Designed for the user who needs increased lateral support, the IncrediBack® Deep Back boasts wide moldable lateral wings that aid in keeping the user upright and positioned correctly.

## INCREDIBACK® TALL MOLDABLE



### ABOUT THE TALL MOLDABLE BACK

- Designed for users who need more neck and head support than the standard IncrediBack® offers. The Tall Back with headrest is fully moldable for customized support and stability. Backrest folds with wheelchair.

## INCREDIBACK® TALL RIGID



### ABOUT THE TALL RIGID BACK

- Designed for the user who requires a solid reclining back along with extra head and neck support.

## INCREDIBACK® TALL DEEP



### ABOUT THE TALL DEEP BACK

- Designed for users who need more neck and head support, combined with increased lateral stability. The Tall Deep Back includes moldable wings for customizable lateral support and a moldable headrest for extra head and neck stability.

# INCREDIHUGGER



## ABOUT THE INCREDIBACK

- Created to accommodate forward or lateral leaners.
- All models fold with wheelchair.
- Reclines up to 30° and is fully adjustable for angle and height (must use anti-tip bars when reclined).
- Patented moldable aluminum stays provide extra lumbar and back support when needed.
- Dual density high resiliency foam comfortably contours to the user's anatomy.

## WEIGHT CAPACITY

All Sizes	450 lbs
-----------	---------

### MOLDABLE INCREDIHUGGER

Moldable	W x H	WC Size
415A	15 x 21	16"
415B	17 x 21	18"
415C	19 x 21	20"
415D	21 x 21	22"

### TALL INCREDIHUGGER

Tall	W x H	WC Size
415TA	15 x 34	16"
415TB	17 x 34	18"
415TC	19 x 34	20"
415TD	21 x 34	22"

# ELEMENTS BACK



## ABOUT THE ELEMENTS BACK

- Strapping system can accommodate for kyphosis and provide lumbar support.
- 1" pressure relieving foam provides a more comfortable back support than a standard sling back.
- Back installs directly over wheelchair canes replacing existing wheelchair back.
- Steel D-rings provide superior strength and durability.

## COLLAPSIBLE BACK FOR FOLDING WHEELCHAIRS

- Installation is made easy with a durable strapping system.
- The Elements Back design allows the entire backrest to fold with the wheelchair for easy transportation and storage.

## ADJUSTABLE TENSION STRAPPING SYSTEM

- Innovative strapping system can accommodate for kyphosis and provide lumbar support.
- Using hook and loop attachment, the back tension is easily adjustable to fit the needs of specific users.

## WEIGHT CAPACITY

WC Size 16 - 21	250 lbs
WC Size 22 - 26	350 lbs

### PART NUMBERS

Comfort-Tek	Stretch-Air	WC Size
BKSTRPF-1521	BKSTRPS-1521	16 - 21
BKSTRPF-2129	BKSTRPS-2129	22 - 26



Adjustable Tension Strapping System



Collapsible Back for Folding Wheelchairs

# SIDEHUGGER

## ABOUT THE SIDEHUGGER

- Foam lateral supports help with positioning by discouraging lateral and forward leaning through cognitive cues.
- Restraint-free and does not impede arm movements.
- High resiliency foam contours to the user's anatomy.
- Works with existing back for easy installation.

## WEIGHT CAPACITY

All Sizes	450 lbs
-----------	---------

STANDARD SIDEHUGGER			TALL SIDEHUGGER		
Moldable	W x H	WC Size	Tall	W x H	WC Size
84A	15 x 21	16"	84TA	15 x 34	16"
84B	17 x 21	18"	84TB	17 x 34	18"
84C	19 x 21	20"	84TC	19 x 34	20"
84D	21 x 21	22"	84TD	21 x 34	22"



# COMFORT BACK

## ABOUT THE COMFORT BACK

- Coincides with existing wheelchair back.
- Available with or without built-in lumbar support.
- Dual density, high resiliency foam contours to user's anatomy.
- Easy installation.

## WEIGHT CAPACITY

All Sizes	450 lbs
-----------	---------

COMFORT BACK			
W/Lumbar Support	W/out Lumbar Support	W x H	WC Size
67A	672A	14 x 18	16"
67B	672B	16 x 18	18"
67C	672C	18 x 18	20"
67D	672D	20 x 18	22"



# CONTOUR VISCO BACK

## ABOUT THE CONTOUR VISCO BACK

- Coincides with existing wheelchair back.
- Dual density, high resiliency foam contours to user's anatomy.
- Easy installation.

## VISCO MEMORY FOAM

- Four pound Visco foam contours to the user's body, promoting maximum skin protection.

## WEIGHT CAPACITY

All Sizes	450 lbs
-----------	---------

CONTOUR VISCO BACK		
Standard	W x H	WC Size
674A	16 x 18	16"
674B	18 x 18	18"
674C	20 x 18	20"
674D	22 x 18	22"



# LATERAL SUPPORT ASSEMBLY



## ADJUSTABLE LATERAL WINGS

Easily installs over existing sling back



Adjustable lateral wings can be independently moved up and down, left and right

## ABOUT THE LATERAL SUPPORT ASSEMBLY

- Installs over existing sling back in a matter of seconds.
- Pressure relieving assembly incorporates side-to-side and vertical adjustability to provide upright stability.
- Customizable to fit each user's individual needs.
- Lateral wings attach to back with hook and loop attachment, allowing for quick and easy adjustments.
- 6" deep large pads or 4" deep small pads available.
- Fits wheelchairs 15" - 22" wide.

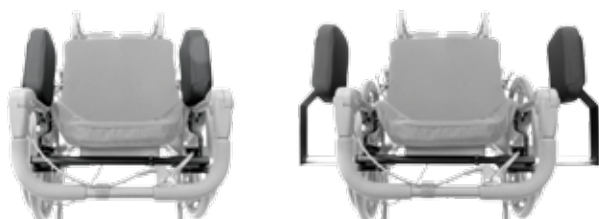
## LATERAL SUPPORT ASSEMBLY

Part Number	Depth
<b>7014</b>	4" Deep
<b>7010</b>	6" Deep

# SIDEMINDER



Rotate and adjust vertically



Adjusts in and out 6" (14" - 24")

## ABOUT THE SIDEMINDER

- Designed to accommodate aggressive side and forward leaners.
- All steel construction ensures durability of product.
- Contoured or standard lateral pads provide optimal support for moderate to aggressive leaners.
- May be ordered with or without laterals and with or without headrest.
- Laterals adjust for height, depth, and inner dimension to fit specific user requirements.
- Installs directly onto wheelchair canes.
- New quick release lever allows unit to be easily removed for chair transportation or storage.

## SIDEMINDER:BOTH SIDES

Standard	Contoured	W x L	WC Size
<b>7000</b>	<b>7020</b>	8" x 5.5"	14" - 24"

## SIDEMINDER:NO SUPPORTS

Part Number	WC Size
<b>7080</b>	14" - 24"

## SIDEMINDER : EXTENSION PLATES

Standard	Product
<b>7008</b>	For Reclining Chairs

## SIDEMINDER : REPLACEMENT PADS

Standard	Product
<b>7003</b>	Standard
<b>7004</b>	Contoured

# TRUNK SUPPORT

## ABOUT THE TRUNK SUPPORT

- More comfortable than a standard wheelchair arm pad.
- High resiliency foam provides increased comfort.
- Fits left or right side.
- Available in "Standard Trunk Support" with removable straps or "Rigid Trunk Support".

TRUNK SUPPORT		
Standard	Rigid	Product
79	791	Right or Left



## ABOUT THE INTERLOCK BRACKET

- The interlock bracket locks down to either 3/4" or 7/8" (1" upon request) tubing using a two bolt connection.
- Comes with Trunk Support only.



STANDARD SUPPORT



RIGID SUPPORT

# FLAT TOP LATERAL ROLL

## ABOUT THE FLAT TOP LATERAL ROLL

- Provides arm support and protects user from wheelchair.
- High resiliency foam provides increased comfort.
- Easy to install over existing armrest.

STANDARD FLAT TOP		LOW PROFILE	
Part Number	W x L	Part Number	Length
80A	5.5" x 16"	801A	16"
80B	7.5" x 16"	801C	10"
80C	5.5" x 10"		
80D	7.5" x 10"		



FLAT TOP



LOW PROFILE

# HIP BOLSTER

## ABOUT THE HIP BOLSTER

- Protects user from the side of the wheelchair.
- Solace cover.
- Strapping system secures around wheelchair side.

HIP BOLSTER	
Part Number	L x W x H
81A	14" x 2" x 6"
81B	18" x 3" x 6"



# SIDEMINDER HEADREST

## ABOUT THE SIDEMINDER HEADREST

- Dual layers of high resiliency foam provide comfort.
- Durable hardware ensures quality and function of the support.
- Moldable stays allow for total custom fit.
- Must be ordered with Sideminder.

### SIDEMINDER HEADREST

Part Number	WC Size
HRM	14" - 24" with Sideminder

## HEADREST PAD

- Perforated 'V' shaped headrest pad contours to lower occipital. May be modified by the user.



## HEADREST HARDWARE

- Gear teeth allow hardware to lock tightly into place.
- Adjusts 1/2" behind backrest to 7" forward of the backrest.
- Adjustable hardware allows the headrest pad to move side to side to fit the user's needs.



'V' Shaped Pad

Head Support Hardware

# SWING-AWAY AMP

## ABOUT THE SWING-AWAY AMP

- Designed to install on all popular wheelchairs within minutes.
- Provides patients a fully adjustable amputee support that will coincide with any wheelchair cushion.
- Allows patients to be transferred in and out of a wheelchair within seconds.
- Installs onto either left or right side of wheelchair.
- Fits tubing sizes from 7/8" to 1".

### 10" SWING AWAY AMP

Extension Kit	Thickness	W x L
AMPSA810	3"	8" x 10"
AMPSA910	3"	9" x 10"
AMPSA1010	3"	10" x 10"
AMPSA1110	3"	11" x 10"
AMPSA1210	3"	12" x 10"

### 14" SWING AWAY AMP

Extension Kit	Thickness	W x L
AMPSA814	3"	8" x 14"
AMPSA914	3"	9" x 14"
AMPSA1014	3"	10" x 14"
AMPSA1114	3"	11" x 14"
AMPSA1214	3"	12" x 14"

## SWING-AWAY AMP HARDWARE

- Hardware allows for fast and simple swing away removal.
- Swing away feature allows patients to be easily transferred in and out of a wheelchair.
- Pad can be easily removed from and reinstalled onto wheelchair.

## VERTICAL ADJUSTABILITY

- Toggle lever allows positioning at multiple angles.
- Up to 4" of height adjustment to accommodate varying seat cushion thicknesses.
- Pad can be adjusted 3" in depth to accommodate wheelchair depth conversion kits.



Swing-Away Amp Hardware



Vertical Adjustability

# COMFORT ARM

## ABOUT THE COMFORT ARM

- Comfort Arm design provides finger support for all users.
- Comfortable straps for securing the arm can be adjusted or removed.
- Provides support for contractures and tone while also helping to prevent finger drop.
- Moldable option can be used to elevate fingers.

## INTERLOCK BRACKET

- The interlock bracket locks down to 3/4" up to 1" tubing with a two-bolt connection.
- Standard with fixed or swing-away hardware option.

## SWING-AWAY HARDWARE

- The rotating base system allows the comfort arm to be angularly rotated side-to-side and adjusted front to back 7".

## EAD HARDWARE

- Allows arm support to be elevated and articulated with a quick release lever.
- Arm support can be adjusted for depth up to 3" & width up to 5".
- Hardware weighs only 1.2 lbs.

### COMFORT ARM DIMENSIONS

Label	Side
L	Total Arm Length
W1	Total Arm Width
W2	Inside Arm Width
T1	Inside Rear Height
T2	Pad Thickness

### STANDARD ARM SUPPORTS

Part Number	L x W1	W2	T1	T2	Side
2002R-PAD	22" x 6"	4.0"	2.75"	1.5"	Right
2002L-PAD	22" x 6"	4.0"	2.75"	1.5"	Left
2002R-14-PAD	14" x 6"	4.0"	2.75"	1.5"	Right
2002L-14-PAD	14" x 6"	4.0"	2.75"	1.5"	Left
2002R-17-PAD	17" x 6"	4.0"	2.75"	1.5"	Right
2002L-17-PAD	17" x 6"	4.0"	2.75"	1.5"	Left

### LOW ARM SUPPORTS

Part Number	L x W1	W2	T1	T2	Side
2004R-PAD	22" x 6"	3.0"	N/A	1.25"	Right
2004L-PAD	22" x 6"	3.0"	N/A	1.25"	Left
2004R-14-PAD	14" x 6"	3.0"	N/A	1.25"	Right
2004L-14-PAD	14" x 6"	3.0"	N/A	1.25"	Left
2004R-17-PAD	17" x 6"	3.0"	N/A	1.25"	Right
2004L-17-PAD	17" x 6"	3.0"	N/A	1.25"	Left

### MOLDED ARM FOR EAD HARDWARE

Part Number	Length	Side
2300PR-PAD	22"	Right
2300PL-PAD	22"	Left
2300PR-14-PAD	14"	Right
2300PL-14-PAD	14"	Left

### MOLDED ARM HARDWARE

Part Number	Hardware	Side
2100R-HARD	Slide On	Right
2100L-HARD	Slide On	Left

### STANDARD ARM MOLDABLE SUPPORTS

Part Number	L x W1	W2	T1	T2	Side
2002R-M-PAD	22" x 6"	4.0"	1.75"	1.5"	Right
2002L-M-PAD	22" x 6"	4.0"	2.75"	1.5"	Left

### LOW ARM MOLDABLE SUPPORTS

Part Number	L x W1	W2	T1	T2	Side
2004R-M-PAD	22" x 6"	3.0"	N/A	1.25"	Right
2004L-M-PAD	22" x 6"	3.0"	N/A	1.25"	Left

### COMFORT ARM HARDWARE

Part Number	Hardware	Side
1000R-HARD	Fixed Interlock	Right
1000L-HARD	Fixed Interlock	Left
2000R-HARD	Swing Away	Right
2000L-HARD	Swing Away	Left
3000R-HARD	EAD	Right
3000L-HARD	EAD	Left

## STANDARD ARM



## MOLDED ARM



## LOW ARM



## EAD HARDWARE



ELEVATING



ARTICULATING



DEPTH-ADJUSTABLE

# COMPLETE FEET



**STANDARD**



**STANDARD,  
NO SEPARATOR**



**TALL**



**TALL,  
NO SEPARATOR**

## ABOUT THE COMPLETE FEET

- Unique heel cut-out eliminates contact with heel, prevents pressure points and reduces risk of skin breakdown.
- Optional leg separator keeps feet and legs positioned properly.
- Medium density foam construction provides increased comfort.
- Foam design protects the feet from door frames and other obstructions.
- Non-skid fabric on foot support helps maintain foot positioning.
- Durable securing buckle and bolt-on option comes standard with all models.
- Comes standard with Solace Cover.

## BOLT ON INSTALLATION

- **Bolt-On Connection:** Bolt on connection works with all foot plates. Recommended for residents with tone.

### COMPLETE FEET WITH LEG SEPARATOR

Standard	Gel	WC Size	W x L x H	Thickness
69A	69GA	16"	15.5 x 10.5 x 8	2.25"
69B	69GB	18"	17.5 x 10.5 x 8	2.5"
69C	69GC	20"	19.5 x 10.5 x 8	3"
69D	69GD	22"	21.5 x 10.5 x 8	3"

### COMPLETE FEET W/OUT LEG SEPARATOR

Standard	Gel	WC Size	W x L x H	Thickness
696A	696GA	16"	15.5 x 10.5 x 8	2.25"
696B	696GB	18"	17.5 x 10.5 x 8	2.5"
696C	696GC	20"	19.5 x 10.5 x 8	3"
696D	696GD	22"	21.5 x 10.5 x 8	3"

### COMPLETE FEET TALL WITH LEG SEPARATOR

Standard	Gel	WC Size	W x L x H	Thickness
69TA	69TGA	16"	15.5 x 10.5 x 12	2.25"
69TB	69TGB	18"	17.5 x 10.5 x 12	2.5"
69TC	69TGC	20"	19.5 x 10.5 x 12	3"
69TD	69TGD	22"	21.5 x 10.5 x 12	3"

### COMPLETE FEET TALL W/OUT LEG SEPARATOR

Standard	Gel	WC Size	W x L x H	Thickness
696TA	696TGA	16"	15.5 x 10.5 x 12	2.25"
696TB	696TGB	18"	17.5 x 10.5 x 12	2.5"
696TC	696TGC	20"	19.5 x 10.5 x 12	3"
696TD	696TGD	22"	21.5 x 10.5 x 12	3"

### COMPLETE FEET FOOT SUPPORT ONLY

Standard	Gel	WC Size	W x L
695A	695GA	16"	15.5 x 10.5
695B	695GB	18"	17.5 x 10.5
695C	695GC	20"	19.5 x 10.5
695D	695GD	22"	21.5 x 10.5

# SINGLE FOOT

## ABOUT THE SINGLE FOOT

- Unique heel cut-out eliminates contact with the heel, preventing pressure points and reduces risk of skin breakdown.
- Optional gel pack in foot support reduces pressure, shear and heat build-up.
- Foam design protects the foot from door frames and other obstructions.
- Medium density, high resiliency foam construction provides maximum comfort.
- Non-skid fabric on foot support helps maintain foot positioning.
- Tapered bottom accommodates new style foot plates.
- Styles include: Tall Single Foot and Elevating Single Foot with elevating leg rest mount.
- Comes standard with Solace cover.

## HARDWARE

- **Clamp-On Connection:** Easy on, easy off connection gives user's a versatile attachment.
- **Bolt-On Connection:** Bolt on connection works with all foot plates. Recommended for residents with tone.

SINGLE FOOT				
Standard	Gel	Mounting	W x L x H	Thickness
698	698G	Bolt-On	7 x 10 x 8	1.75"
697	687G	Clamp-On	7 x 10 x 8	1.75"

SINGLE FOOT TALL				
Tall	Gel	Mounting	W x L x H	Thickness
698T	698TG	Bolt-On	7 x 10 x 12	1.75"
697T	687TG	Clamp-On	7 x 10 x 12	1.75"

SINGLE FOOT ELEVATING				SINGLE FOOT, FOOT SUPPORT ONLY			
Part #	Mounting	W x L x H	Thickness	Standard	Gel	Mounting	W x L x H
698LE	Bolt-On	7 x 10 x 8	1.75"	6982	6982G	Bolt-On	7 x 10 x 2
697LE	Bolt-On	7 x 10 x 14	1.75"	6972	6872G	Clamp-On	7 x 10 x 2



# MAXXCARE HEEL PRO EVOLUTION

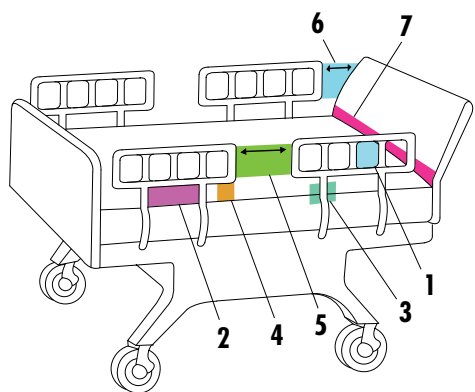
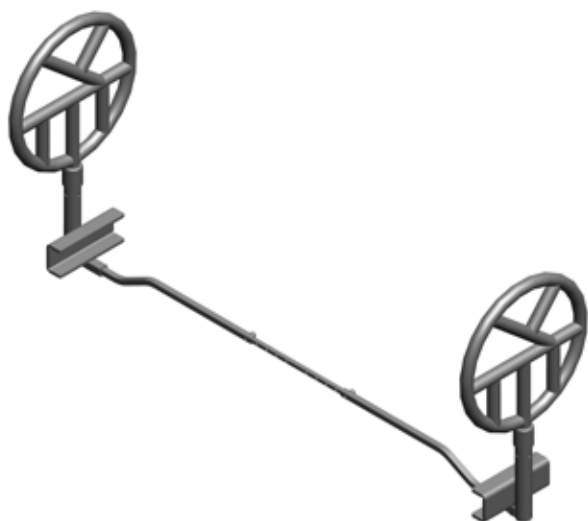
## ABOUT THE MAXXCARE HEEL PRO EVOLUTION

- New design features an improved lift of the heel, improved fit, and improved fixation
- Protects against heel decubitus and shear forces
- The Heel Pro Evolution does not influence mobility and the mechanically strong air tubes allow the user to walk with the Heel Pro Evolution on.
- Support quick wound healing
- Prevents drop feet
- Washable

MAXXCARE HEEL PRO EVOLUTION	
Part Number	Size
MAXXCARE1	Standard (one size fits most)



# UNIVERSAL HALO SAFETY RING



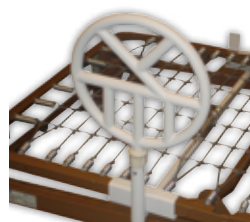
- Zone 1:** Within the rail.
- Zone 2:** Between the top of the compressed mattress and the bottom of the rail, between rails ports.
- Zone 3:** Between the rail and the mattress.
- Zone 4:** Between the top of the compressed mattress and the bottom of the rail, at the end of the rail.
- Zone 5:** Between the split bed rails.
- Zone 6:** Between the end of the rail and the side edge of the head or foot board.
- Zone 7:** Between the head or footboard and the mattress end.

## ABOUT THE UNIVERSAL HALO SAFETY RING

- The Halo Safety Ring, the only patented institutional bed mobility device that prevents lateral mattress movement, and gap space in the most critical zones: 1, 2, 3, & 4. The Halo Safety Ring meets and exceeds the HBSW and FDA's final dimensional guidelines against bed entrapment. The Halo Safety Ring passes the new "Bed System Measurement Device" pass/fail test that has been approved for Bed System testing by the FDA and state surveying teams.
- Provides exit points for neck, head, & chest and eliminates the four most critical zones of entrapment.
- Meets FDA guidelines for patient transfers & therapy bedside assistant for both patient transfers & therapy.
- Promotes bed mobility & increases environmental independence.
- Prevents lateral mattress movement and gap space elimination in the most critical zones: 1, 2, 3, & 4.
- Available in single and double sided for institutional style beds.
- Easy to install turn-buckle mounting bracket.
- 1000 lb. weight capacity steel construction

## BED FRAME MOUNT

Universal Halo Safety Ring mounts to bed frame for stability.



## BED HANDLE ROTATES

Bed handle rotates 90° either direction to accommodate different user positions and allows ease of bed exit.



## HALO SAFETY RING - INSTITUTIONAL BED MODEL

Part #	Description
77301	One sided circle device with mattress stay bar and hardware.
77302	Both sides circle device with hardware.
77103	One sided circle device with hardware for carrol.
77113	Halo Safety Ring, adjustable length bed (ALB) unit complete.

# HALO ALC

## ABOUT THE HALO ALC

- The Halo Safety Ring, the only patented institutional bed mobility device that prevents lateral mattress movement, and gap space in the most critical zones: 1, 2, 3, & 4. The Halo Safety Ring meets and exceeds the HBSW and FDA's final dimensional guidelines against bed entrapment. The Halo Safety Ring passes the new "Bed System Measurement Device" pass/fail test that has been approved for Bed System testing by the FDA and state surveying teams.
- Provides exit points for neck, head, & chest and eliminates the four most critical zones of entrapment.
- Meets FDA guidelines for patient transfers & therapy bedside assistant for both patient transfers & therapy.
- Promotes bed mobility & increases environmental independence.
- Prevents lateral mattress movement and gap space elimination in the most critical zones: 1, 2, 3, & 4. The universal width and height adjustment accommodates all bed styles (up to queen) and allows bed to be off the wall, preventing bed roll-outs & falls.
- Comes standard with a universal height adjustment system to accommodate all bed systems' mattress and box spring heights.
- 500 lb. weight capacity steel construction.

## BED FRAME MOUNT

Halo ALC mounts to bed frame for stability.

### HALO ALC - ASSISTED LIVING / HOMECARE MODEL

Part Number	Description
77121	Halo ALC (Assisted Living Centers) complete kit.



Bed Frame Mount

# CIRCLE PAD PROTECTOR

## ABOUT THE CIRCLE PAD PROTECTOR

- Prevents bruising from any medical disorder that might cause the skin to become thin, frail, or to bruise.
- Promotes increased safety and a better sleeping environment.
- Installs with simple hook and loop attachments.

### CIRCLE PAD PROTECTOR

Part Number
77118



# LAP TRAYS

## DURASOFT LAP TRAY



### ABOUT THE DURASOFT LAP TRAY

- Rigid insert is covered by high resiliency foam and easily cleaned Solace cover.
- Quick attachment to full length or desk length arms.
- Stability provided by the clamp, webbing, or slide attachment.
- Forward adjustment for larger users.
- Easily moved for transfers.
- Optional cup holder.

#### FULL DURASOFT LAP TRAY

Part Number	Mounting	W x L	Thickness
<b>75K</b>	Flip-Up	24" x 18"	1.5"
<b>75W</b>	Webbing	24" x 18"	1.5"
<b>75KSM</b>	Slide Mount	24" x 18"	1.5"

## DURASOFT HALF TRAY



Standard Position



Rotated Out



### ABOUT THE DURASOFT HALF TRAY

- Rigid insert is covered by high resiliency foam and easily cleaned Solace cover.
- Raised outside edge keeps arm positioned correctly.
- Easily swiveled out of the way for transfers or table use.
- Quick attachment to full length or desk length arms.

#### DURASOFT HALF TRAY

Part Number	Side	W x L	Thickness
<b>762R</b>	Right	24" x 18"	1.5"
<b>762L</b>	Left	24" x 18"	1.5"

## ECONASOFT LAP TRAY



### ABOUT THE ECONASOFT LAP TRAY

- The Econasoft Lap Tray is designed to provide users a lightweight, economical lap tray.
- Combination of a rigid insert, high resiliency foam, and a Solace cover gives patients a lightweight and durable tray.
- Webbing strap attachment allows the tray to be removed and adjusted within seconds.

#### DURASOFT HALF TRAY

Part Number	Mounting	W x L	Thickness
<b>757W</b>	Webbing	24" x 18"	1.5"

## FLIP-UP HALF TRAY



Able to flip 270°



### ABOUT THE FLIP-UP HALF TRAY

- Non-contoured tray with Interlock attachment provides quick attachment to full or desk length arms.
- Rigid insert covered by high-resiliency foam and easily cleaned Solace fabric.
- Easily flipped 270° out of the way for transfers.

#### FLIP-UP HALF TRAY

Interlock	Slide On	Side	W x D	Thickness
<b>761FR</b>	<b>761SFR</b>	Right	11.5" x 21"	1.5"
<b>761FL</b>	<b>761SFL</b>	Left	11.5" x 21"	1.5"

# POSITIONING & BED CARE

## ABDUCTION PILLOW



### ABOUT THE ABDUCTION PILLOW

- Enables users to maintain proper leg positioning while recovering from hip replacements or fractures.
- Double padded straps for a secure fit.
- Solace cover.

#### ABDUCTION PILLOW

Part Number	L x W x H
73A	14" x 14" x 7"
73B	18" x 18" x 7"

## LEG ABDUCTOR WEDGE



### ABOUT THE LEG ABDUCTOR WEDGE

- Enables users to maintain proper leg positioning while recovering from hip replacements or fractures.
- Connects easily to user with soft hook and loop straps.
- Solace cover.

#### LEG ABDUCTOR WEDGE

Part Number	L x W x H
72	7" x 9" x 6"

## GAP SPACE ELIMINATOR



### ABOUT THE GAP SPACE ELIMINATOR

- Eliminates Zone 7 gap space.
- Designed to eliminate gaps between bed and mattress in increments of 2", 4", and 6".
- Units may be used individually or together, depending on size of gap to be eliminated.
- Each unit has a removable machine washable cover and a three strap system.

#### GAP SPACE ELIMINATOR

Part Number
77117

## GAIT BELT



### FAST ATTACH METAL



### SIDE RELEASE PLASTIC

### ABOUT THE GAIT BELT

- Heavy-duty 2" cotton webbing.
- Available in two styles

#### GAIT BELT FAST ATTACH METAL

Part Number	L x W
97A	49" x 2"
97B	60" x 2"
97C	73" x 2"

#### GAIT BELT SIDE RELEASE PLASTIC

Part Number	L x W
96A	49" x 2"
96B	60" x 2"
96C	73" x 2"

## SAFE & SECURE



### ABOUT THE SAFE & SECURE

- Steel clamps and screws secure Safe & Secure to bed rail with no straps.
- Solace cover.
- Available in full rail or half rail lengths.

#### SAFE & SECURE FULL RAIL

Part Number	L x W x H
83A	64" x 2" x 14"

#### SAFE & SECURE HALF RAIL

Part Number	L x W x H
83B	32" x 2" x 14"

## SIT 'N PLACE



### STANDARD



### SUPER

### ABOUT THE SIT 'N PLACE

- Connects to chair with nylon strapping system and side release buckle.
- Available in two sizes: Standard and Super.
- Solace cover.

#### SIT 'N PLACE

Part Number	Dimensions
100SP	Standard
200SSP	Super



P: 1.800.564.9248

F: 1.406.522.8563

[SALES@COMFORTCOMPANY.COM](mailto:SALES@COMFORTCOMPANY.COM)

509 SOUTH 22<sup>ND</sup> AVENUE  
BOZEMAN, MT 59718

[COMFORTCOMPANY.COM](http://COMFORTCOMPANY.COM)